

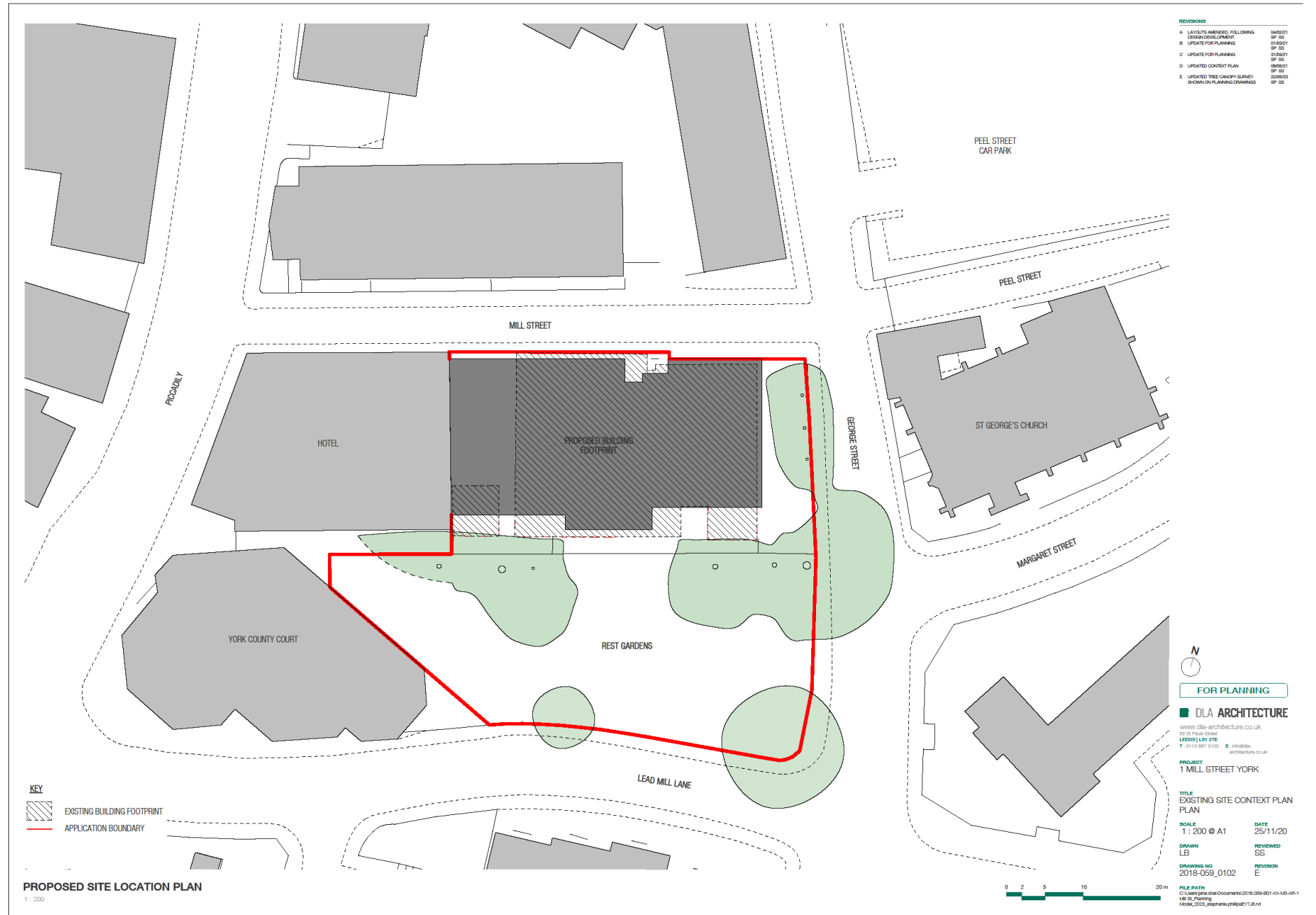


Planning Committee B

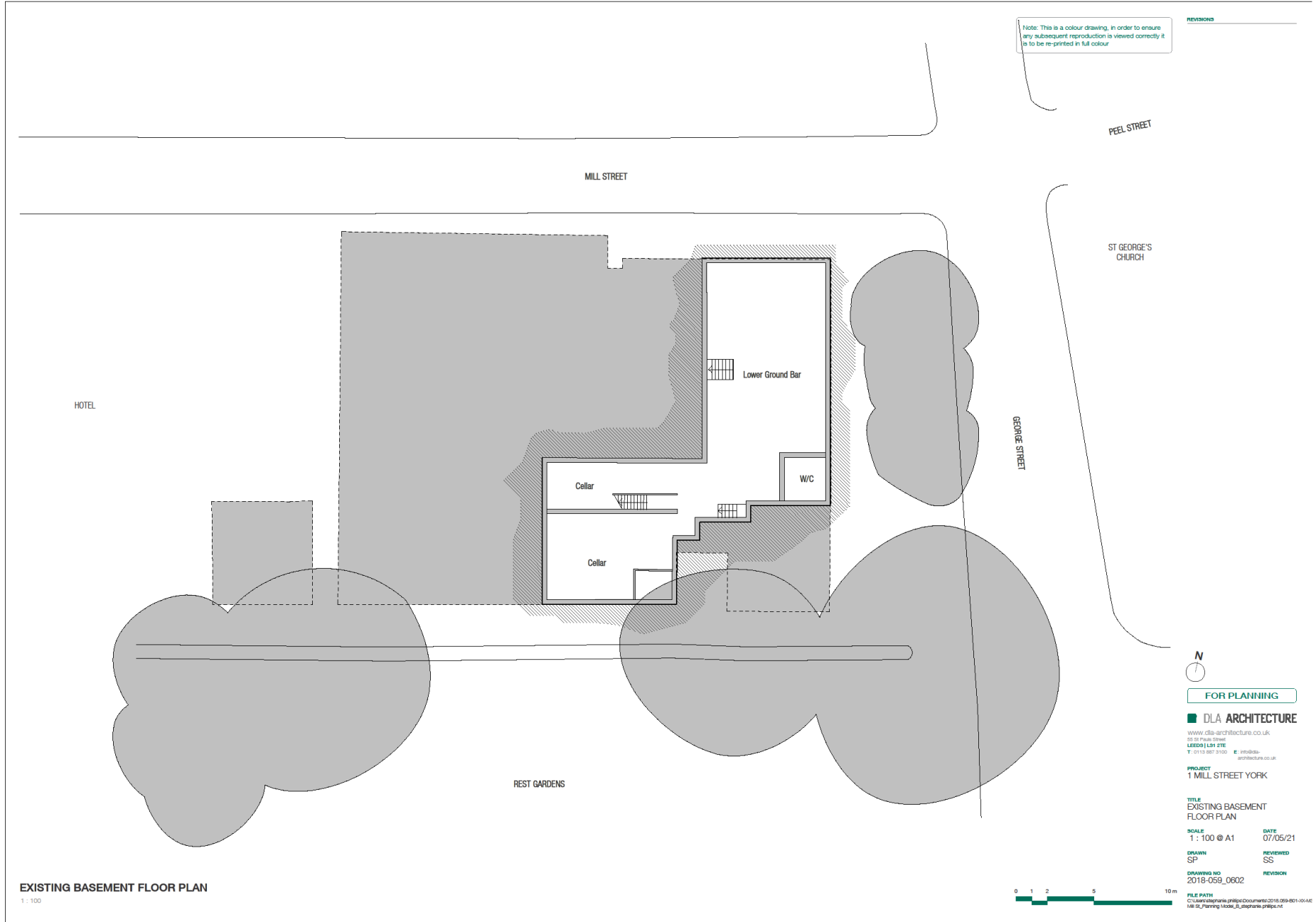
21/01045/FULM

Tramways Club 1 Mill Street

Site Plan – existing building shown as hatched



Existing floor plan – basement



EXISTING BASEMENT FLOOR PLAN
1:100

REVISIONS



FOR PLANNING

DLA ARCHITECTURE
www.dla-architecture.co.uk
55 St Mark Street
LEEDS LS1 2TE
T: 0113 261 3100 E: info@dl-architecture.co.uk

PROJECT
1 MILL STREET YORK

TITLE
EXISTING BASEMENT FLOOR PLAN

SCALE
1:100 @ A1

DATE
07/05/21

DRAWN
SP

REVIEWED
SS

DRAWING NO
2018-059_0602

REVISION

FILE PATH
C:\Users\pripic\Documents\2018_059-061-00-A1\18_05_Planning\180618_0602\pripic.dwg

Existing Floor plans – ground floor

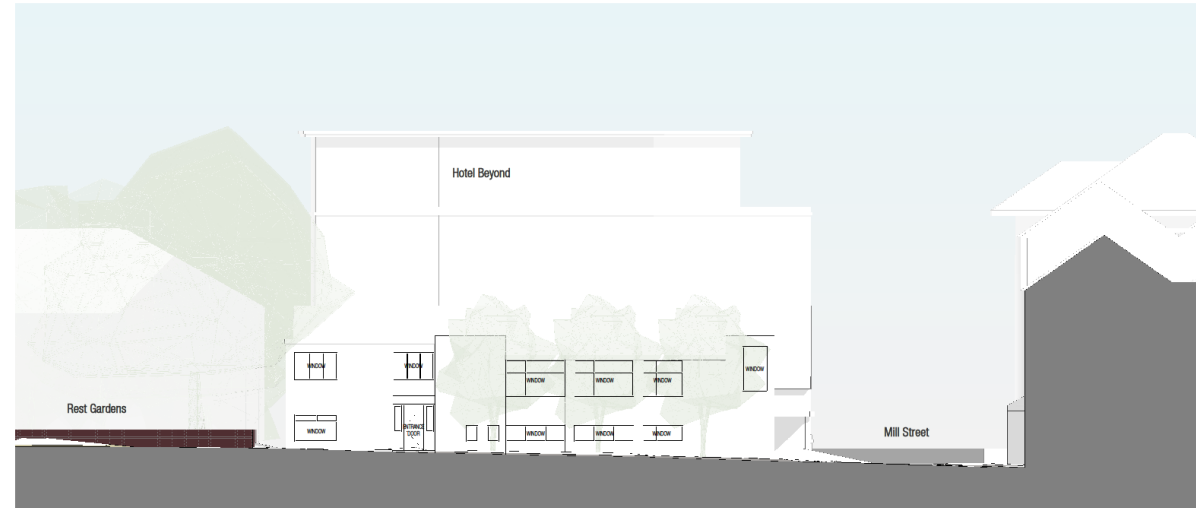


Existing North and East elevations



EXISTING NORTHERN ELEVATION

1 : 100



EXISTING EASTERN ELEVATION

1 : 100

FOR PLANNING

DLA ARCHITECTURE

www.dla-architecture.co.uk
 25 St Pauls Street
 LEEDS LS1 4TE
 T: 0113 887 3100 E: info@dl-architecture.co.uk

PROJECT
 1 MILL STREET YORK

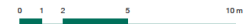
TITLE
 EXISTING ELEVATIONS

SCALE
 1 : 100 @ A1 DATE
 07/05/21

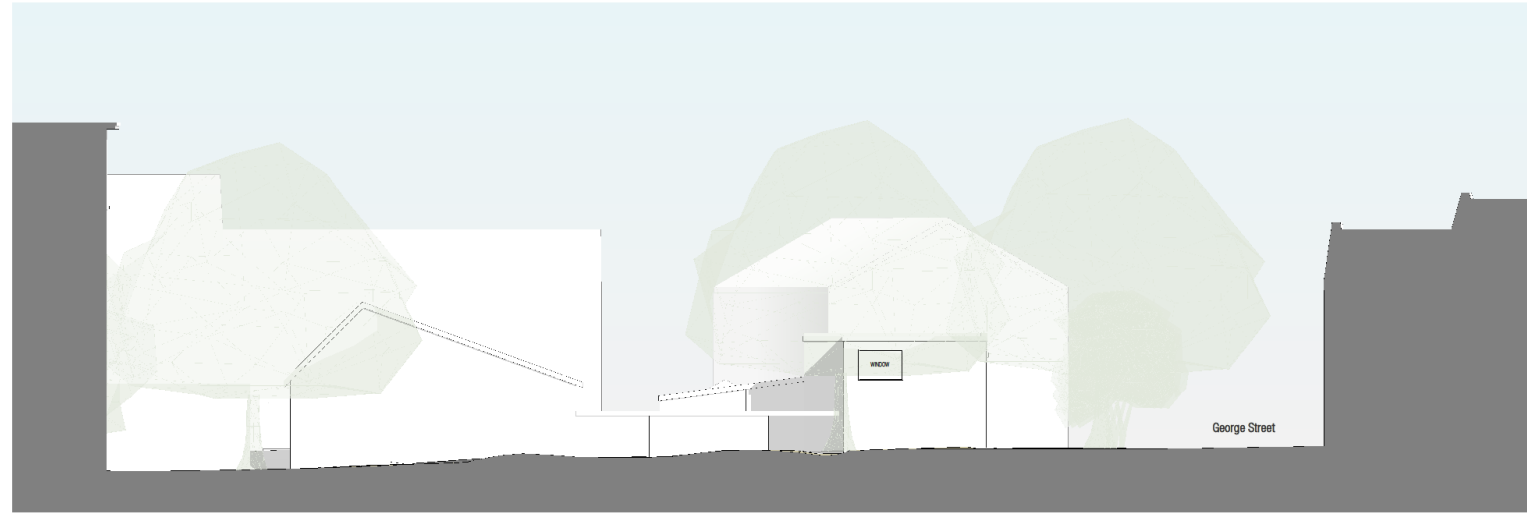
DRAWN
 SP REVIEWED
 SS

DRAWING NO
 2018-059_0605 REVISION

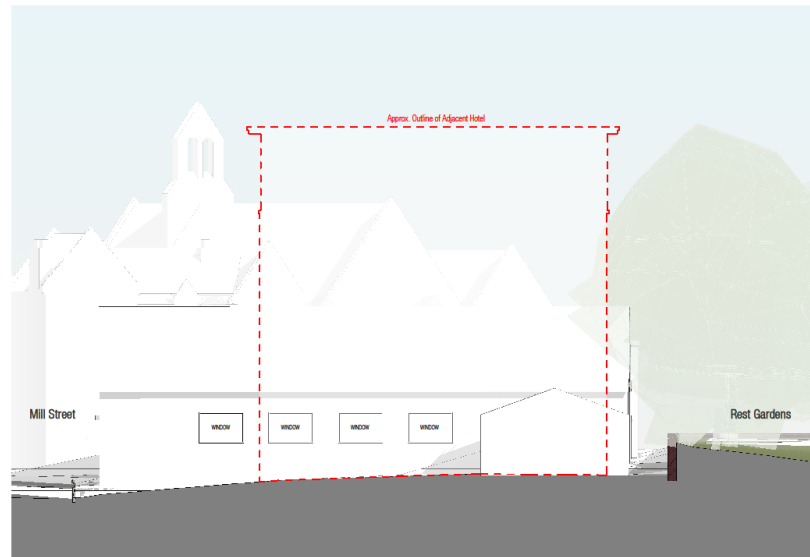
FILE PATH
 C:\Users\stephen.phillips\Documents\2018_059_0601-0604\18_059_0605\18_059_0605.dwg



Existing South and West elevations



EXISTING SOUTHERN ELEVATION
1 : 100



EXISTING WESTERN ELEVATION
1 : 100

FOR PLANNING

DLA ARCHITECTURE
www.dla-architecture.co.uk
25 St Mark Street
LEEDS | LS1 2TE
T: 0113 887 3100 E: info@dl-
architecture.co.uk

PROJECT
1 MILL STREET YORK

TITLE
EXISTING ELEVATIONS

SCALE
1 : 100 @ A1 DATE
07/05/21

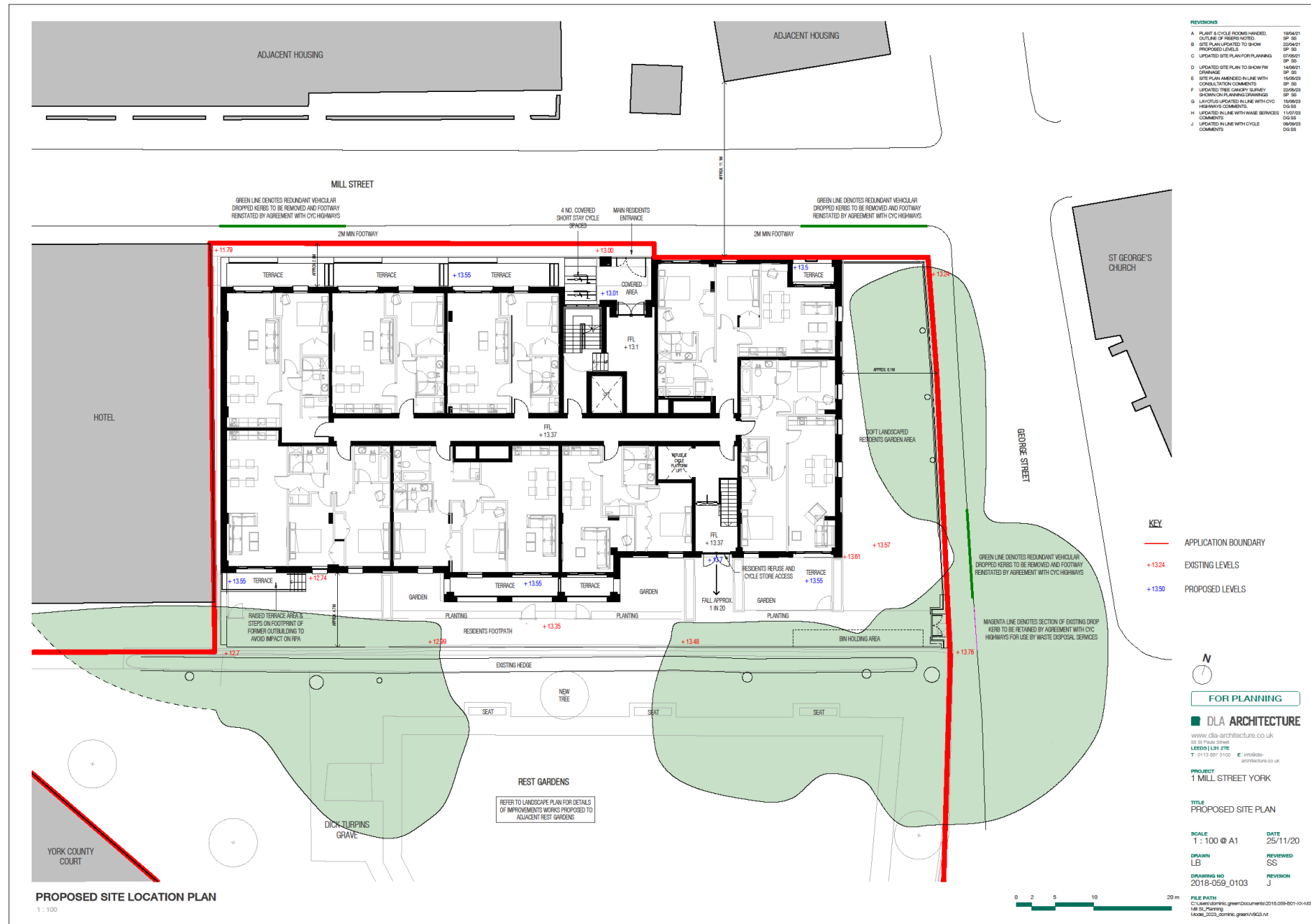
DRAWN
SP REVIEWED
SS

DRAWING NO
2018-059_0606 REVISION

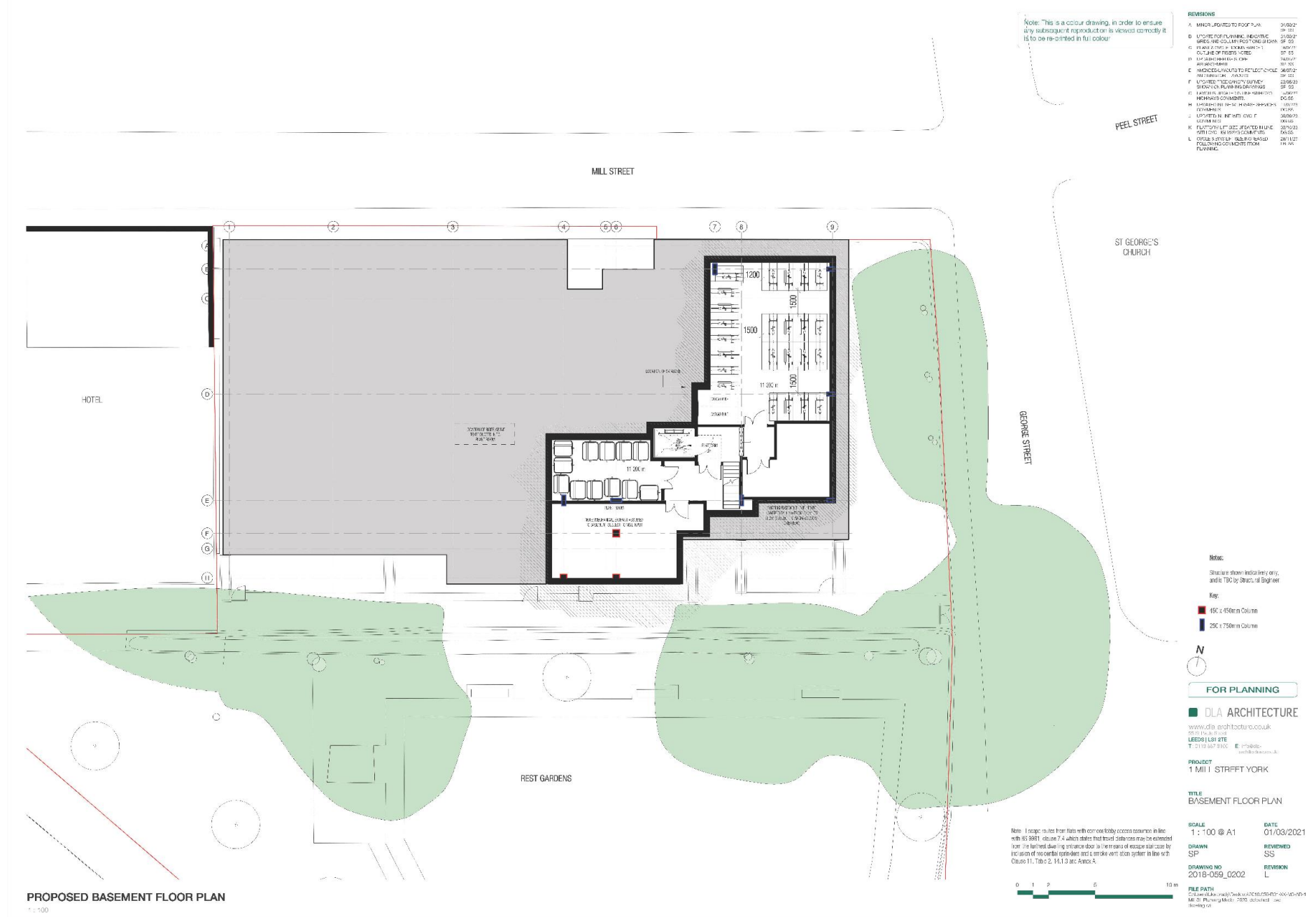
FILE PATH
C:\Users\stephanie.priest\Documents\2018_059-0606\04\1
Mill St Planning - 1000_S_Southwest.priest.dwg



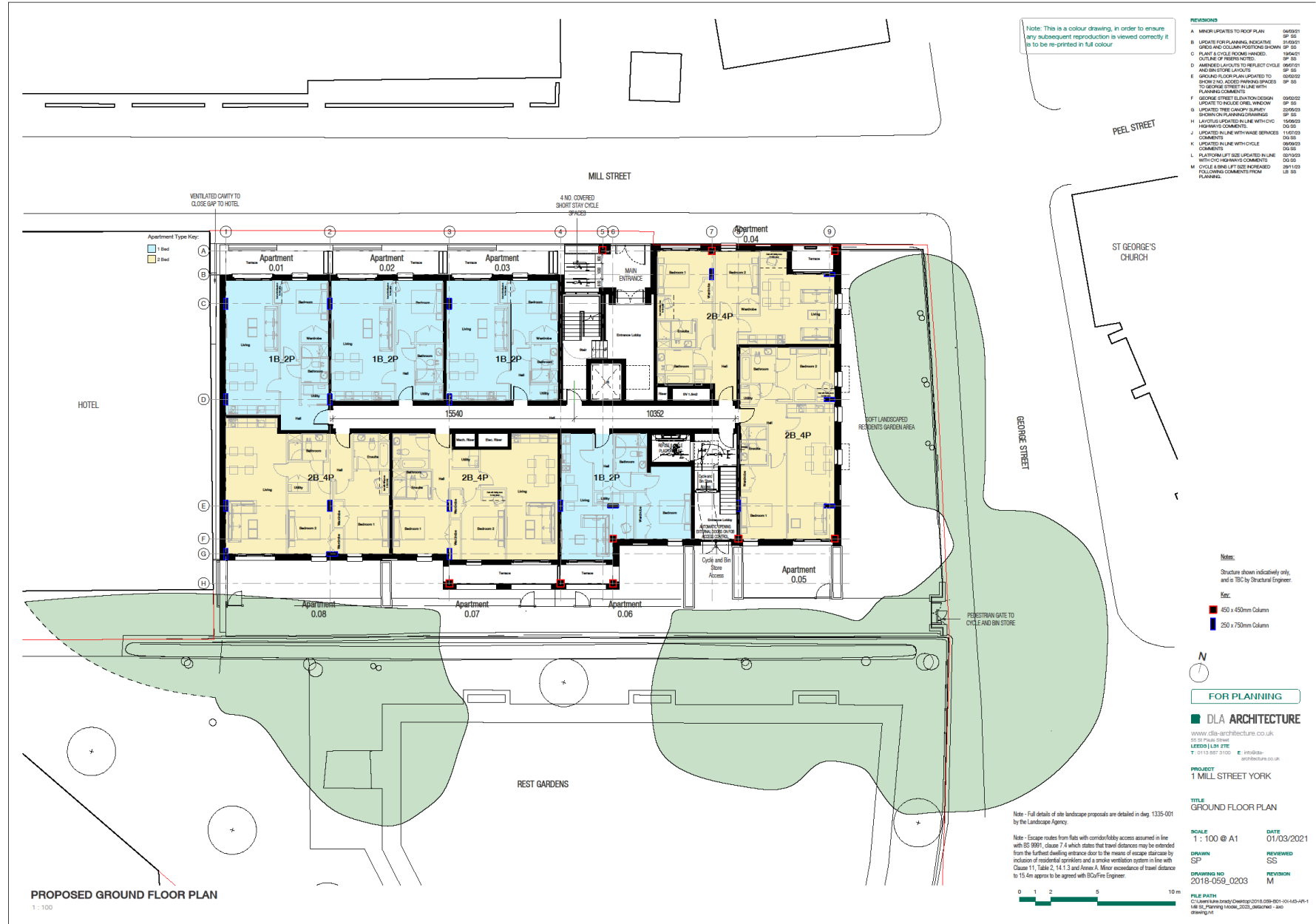
Proposed Site Plan



Proposed basement floor plan



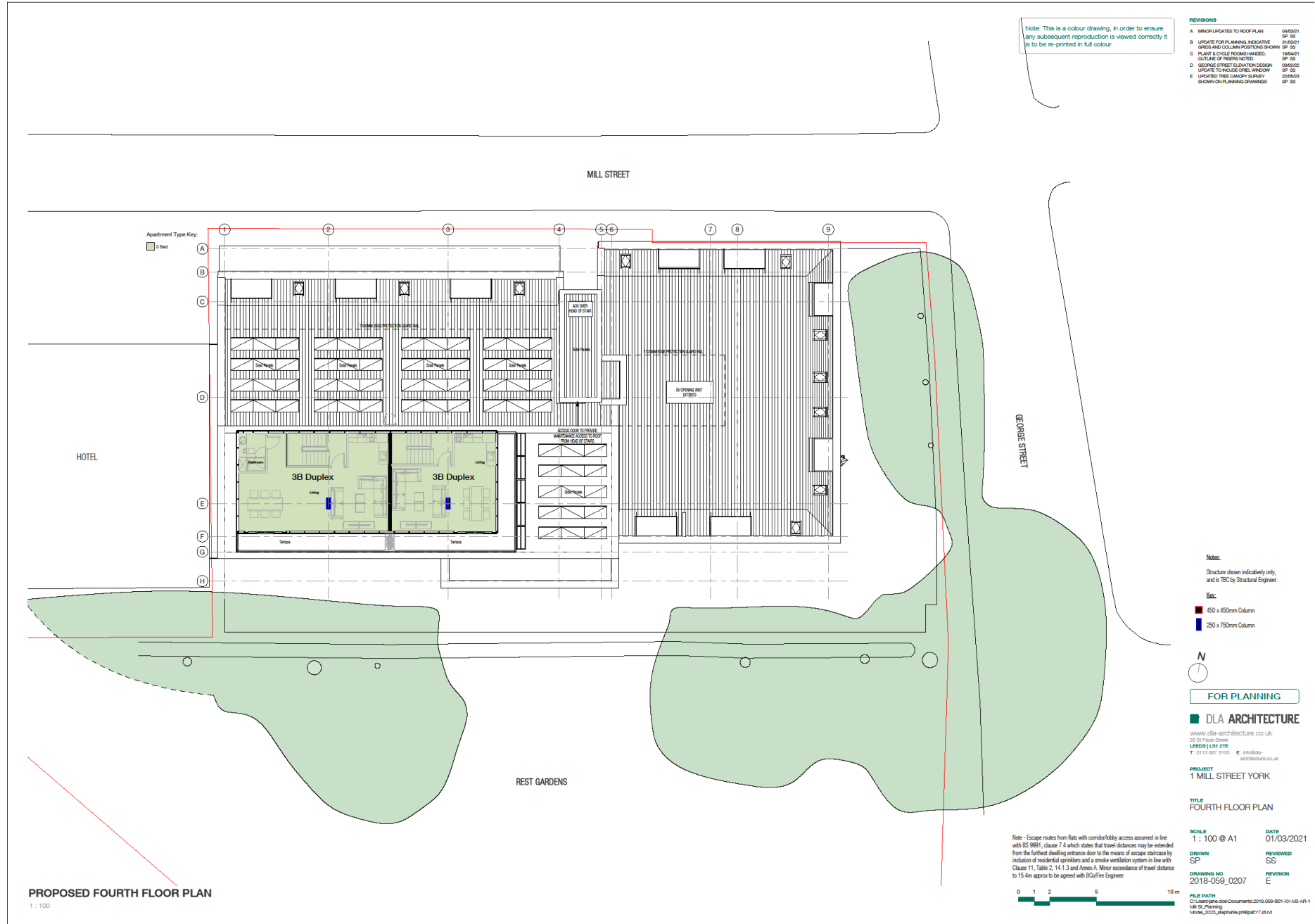
Proposed ground floor plan



Proposed typical upper floors plan



Proposed fourth floor plan



Proposed north and east elevations

REVISIONS

A. MINOR UPDATES TO ROOF PLAN	04/03/21
B. UPDATE FOR PLANNING	21/03/21
C. PLANT & CYCLE ROOMS HANDED OUTLINE OF REVISIONS NOTED	16/04/21
D. GEORGE STREET ELEVATION DESIGN UPDATE TO INCLUDE ORIEL WINDOW	02/05/21
E. UPDATES TREE CANOPY PLANNING SHOWN ON PLANNING DRAWINGS	22/05/21
F. ELEVATIONS UPDATED IN LINE WITH CIC HIGHWAYS COMMENTS	18/06/21



PROPOSED NORTHERN ELEVATION

1 : 100



PROPOSED EASTERN ELEVATION

1 : 100

- Material Key:**
- Smooth Red/Orange Multi Brick (exact specification TBD) laid Stretcher bond with expressed surround to window openings. Dark grey recessed pointing. Projecting string course detail where shown to delineate floor level or parapet upstand.
 - Light Buff Brick/off-white (exact specification tbc) laid Stretcher bond with expressed surround to window openings. Light grey recessed pointing. Projecting string course detail where shown to delineate floor level or parapet upstand.
 - Stone plinth, ashlar type finish with expressed horizontal joints.
 - Loamed panel to terrace (Frame colour TBC - bronze effect).
 - PPC aluminium windows and doors with double glazed units (Frame colour TBC - bronze effect).
 - PPC aluminium windows with double glazed units (Frame colour TBC - bronze effect).
 - Feature window surround (finish tbc).
 - Art stone capping detail with concealed gutter behind parapet.
 - Zinc effect aluminium roof with welded joint (PPC finish - colour zinc).
 - Top hung rooflight with associated flashing kit (colour - grey).
 - Recessed terrace formed within roof. Terrace cheeks to be Zinc effect aluminium roof with welded joint (PPC finish - colour zinc).
 - Lift overrun (finish tbc).
 - Bronze effect loamed panels with insulated back panels, where necessary.
 - Clear glass balustrade with powder coated aluminium handrail (colour tbc). Exact vertical joint setting out subject to supplier input. Use of glass balustrade within external wall build up subject to agreement with BCO regarding combustibility. Balustrade may need to be amended to ppc metal fabric if dictated by Building Regs.
 - Bronze effect ppc capping detail (ppc - colour bronze effect).
 - Roof mounted PV panels - exact number and location subject to MSE detailed design.
 - Bronze effect rainscreen cladding.
 - Fabric window surround in brick finish to match adjacent brickwork.
 - PPC curtain walling with double glazed units (Frame colour TBC - bronze effect). Look-a-like glazing with ceramic control backing, where shown and insulated rear panel.
 - Boundary treatment - refer to Landscape Agency plan for planting details. Vertical bar balustrade where shown in bronze effect painted finish to delineate boundary.
 - Terrace screen with planting - refer to Landscape Agency plan for planting details.
 - Terrace paving - finish tbc.
 - Entrance gates - vertical bar type (colour tbc).
 - Boundary planting to Mill Street illustrative only and subject to agreement with highways as narrow 2m footway.
 - Lightweight Canopy over short stay cycle spaces in line with CIC Highways comments.

FAÇADE MATERIAL KEY (PLANNING)

1 : 100



FOR PLANNING

DLA ARCHITECTURE
 www.dla-architecture.co.uk
 25 St Pauls Street
 LEEDS | LEV 21E
 T: 0113 261 2100 E: info@dl-architecture.co.uk

PROJECT
MILL STREET YORK

TITLE
PROPOSED ELEVATIONS

SCALE
1 : 100 @ A1 DATE
01/03/21

DRAWN
SP REVISION
SS

DRAWING NO
2018-059_0210 REVISION
F

FILE PATH
 C:\Users\dominic.grew\Documents\2018-059-001-001-A15-A Mill St_Planning Model_2023.dwg\c:\Users\dominic.grew\A15G2.rvt

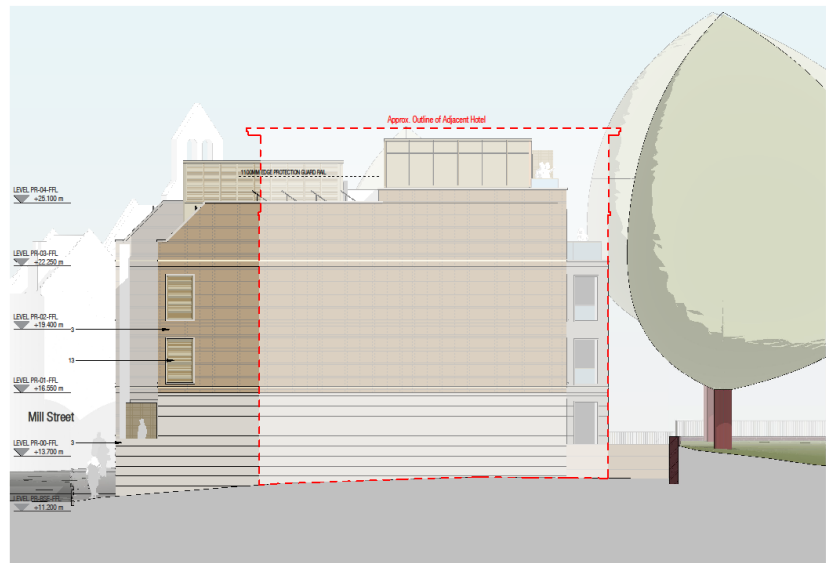
Proposed south and west elevations

REVISIONS

A	MINOR UPDATES TO ROOF PLAN	04/03/21
B	UPDATE FOR PLANNING & WESTERN ELEVATION ACCESS	31/03/21
C	PLANT & CYCLE ROOMS HANDED. OUTLINE OF INSIDE NOTED.	31/03/21
D	GEORGE STREET ELEVATION DESIGN UPDATE TO INCLUDE GRES. WINDOW	05/02/22
E	UPDATED TREE CANOPY SURVEY SHOWN ON PLANNING DRAWINGS	25/05/23



PROPOSED SOUTHERN ELEVATION
1 : 100



PROPOSED WESTERN ELEVATION
1 : 100

- Material Key:**
- Smooth Red/Orange Multi Brick (exact specification TBC) laid Stretcher bond with expressed surround to window openings. Dark grey recessed pointing. Projecting string course detail where shown to delineate floor level or parapet upstand.
 - Light Buff Brick/off-white (exact specification TBC) laid Stretcher bond with expressed surround to window openings. Light grey recessed pointing. Projecting string course detail where shown to delineate floor level or parapet upstand.
 - Stone plinth, ashlar type finish with expressed horizontal joints.
 - Looped panel to terrace (Frame colour TBC) – bronze effect.
 - PPC aluminium windows and doors with double glazed units (Frame colour TBC – bronze effect).
 - PPC aluminium windows with double glazed units (Frame colour TBC – bronze effect).
 - Feature window surround (finish TBC).
 - Art stone capping detail with concealed gutter behind parapet.
 - Zinc effect aluminium roof with wetted joint (PPC finish – colour zinc).
 - Top hung outlight with associated flashing kit (colour – grey).
 - Recessed terrace formed within roof. Terrace cheeks to be Zinc effect aluminium roof with wetted joint (PPC finish – colour zinc).
 - Lift screen (finish TBC).
 - Bronze effect boarded panels with insulated back panels, where necessary.
 - Clear glass balustrade with sp coated aluminium handrail (colour TBC). Exact vertical joint setting out subject to supplier input. Use of glass balustrade within external wall build up subject to agreement with BOD regarding combustibility. Balustrade may need to be amended to spc metal flats if dictated by Building Regs.
 - Bronze effect spc capping detail (spc – colour bronze effect).
 - Roof mounted PV panels – exact number and location subject to M&E detailed design.
 - Bronze effect rainscreen cladding.
 - Falze window surround in brick finish to match adjacent brickwork.
 - PPC curtain walling with double glazed units (Frame colour TBC – bronze effect). Look-a-like glazing with ceramic coated backing, where shown and insulated rear panel.
 - Boundary treatment – refer to Landscape Agency plan for planting details. Vertical bar balustrade where shown in bronze effect painted finish to delineate boundary.
 - Terrace screen with planting – refer to Landscape Agency plan for planting details.
 - Terrace paving – finish TBC.
 - Entrance gates – vertical bar type (colour TBC).
 - Boundary planting to Mill Street illustrative only and subject to agreement with highways as narrow 2m footway.

FAÇADE MATERIAL KEY (PLANNING)
1 : 100

FOR PLANNING

DLA ARCHITECTURE
www.dla-architecture.co.uk
25 St Pauls Street
LEEDS | LS1 3TE
T: 0113 267 9100 E: info@dl-architecture.co.uk

PROJECT
1 MILL STREET YORK

TITLE
PROPOSED ELEVATIONS

SCALE
1 : 100 @ A1

DATE
01/03/21

DRAWN
SP

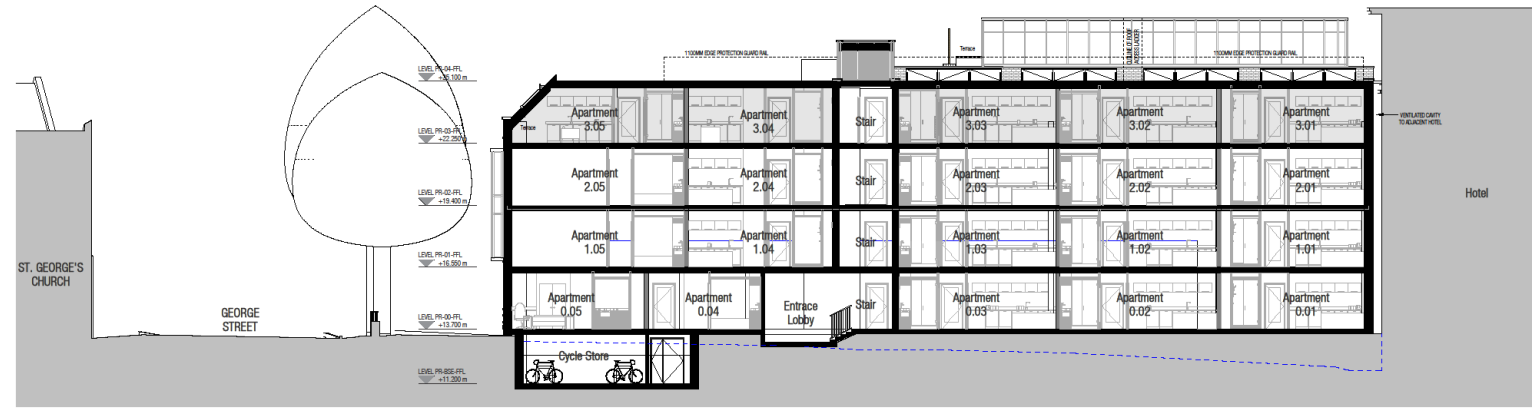
REVIEWED
SS

DRAWING NO
2018-059_0211

REVISION
E

FILE PATH
C:\Users\jms.dal\Documents\2018-059-001-100-AB-AP-1
M&E_Planning
Mock_2023_05phase\planning\7.05.mxd

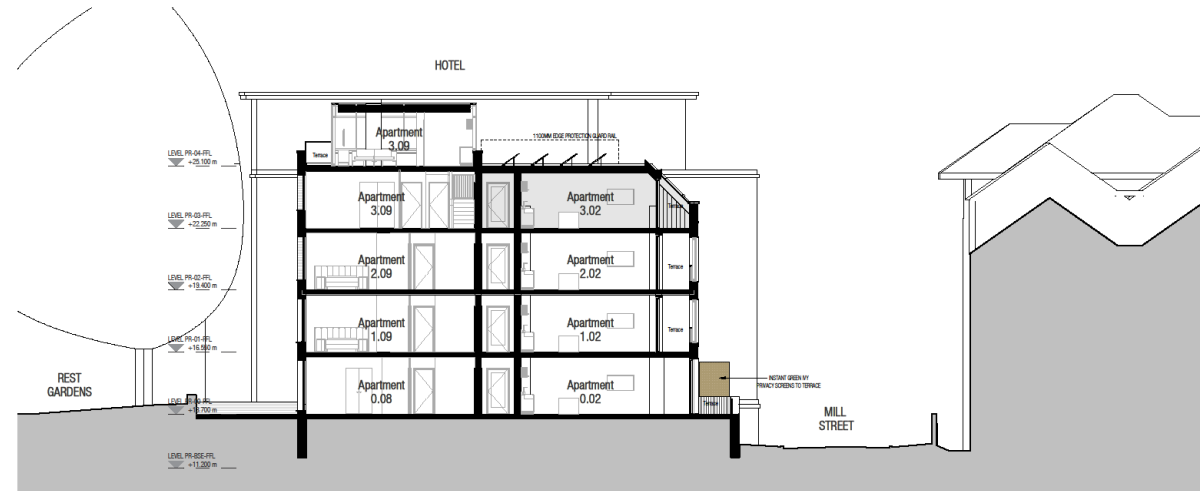
Proposed sections



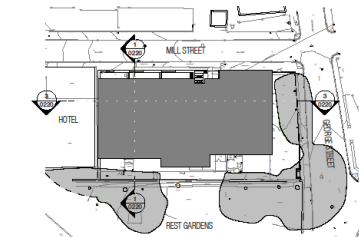
PROPOSED SECTION 3
1 : 100

Key
--- Approximate Existing Topography Line

- REVISIONS**
- A MINOR UPDATES TO ROOF PLAN 04/03/21 SP SS
 - B UPDATE FOR LANSING 21/03/21 SP SS
 - C PLANT & CYCLE ROOMS Hatched 16/04/21 SP SS
 - D OUTLINE OF RISERS Hatched 16/04/21 SP SS
 - E PROVISIONAL TRAIL FROM PUBLIC ROOF INDICATED ON SECTIONS 02/11/22 SP SS
 - F LAYOUTS UPDATED IN LINE WITH CIVIC HIGHWAYS COMMENTS 16/06/23 DS SS



PROPOSED SECTION 1
1 : 100



KEY PLAN
1 : 500



FOR PLANNING

DLA ARCHITECTURE

www.dla-architecture.co.uk
25 St. Thomas Street
LEEDS LS1 2TE
T: 0113 887 3100 E: info@dl-architecture.co.uk

PROJECT
1 MILL STREET YORK

TITLE
PROPOSED SECTIONS

SCALE
As indicated @ A1

DATE
01/03/21

DRAWN
SP

REVIEWED
SS

DRAWING NO
2018-059_0220

REVISION
E

FILE PATH
C:\Users\dominic.green\Documents\2018-059-001-00-ADD-A
M3_SLP_planning
Model_2023_dominic.green\1903.rvt

Proposed landscape masterplan

