

## SYP Bi-Annual Board Performance Report

### January 2014

#### PERFORMANCE REPORT ON COMMUNITY SAFETY PLAN 2011-14

#### 1. Introduction and Overview

1.1. Data and/or update information on progress is not held by the Safer York Partnership support team for all of the indicators contained within the plan.

1.2. The report will be presented in a form in line with the Community Safety Plan 2011-14 which has the following priorities;

- Acquisitive Crime
- Anti-Social Behaviour
- Violent Crime
- Business Crime
- Re-offending Information
- Other Indicators

#### York - All Crime (from IQUANTA)

#### Totals

Target 2013-14

13756

Forecast

11393

Cumulative

7595

Target Monthly Total

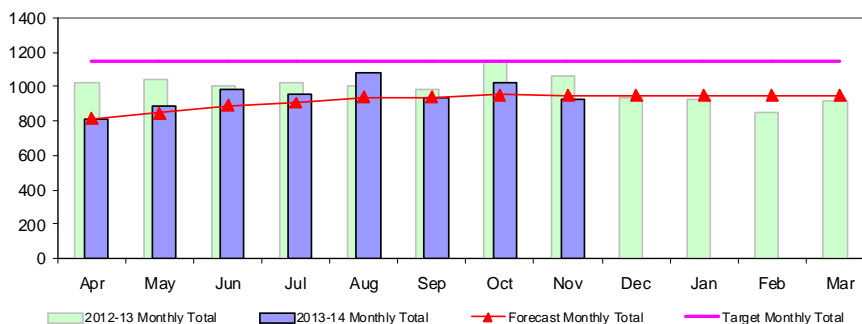
1146.3

Previous Years

2007-08	18924
2008-09	17886
2009-10	14480
2010-11	15199
2011-12	13576
2012-13	11928

Milestone Targets

2013-14	13756
---------	-------



The Graph shows:

- 1) Target level 2013-2014 (Strategy end not the Yearly milestones)
- 2) Forecasted annual total based upon a moving average of months

(There has been no allowance for known seasonal patterns)

Key:

- Action Needed (>120%)
- Caution (100% - 120%)
- No Action (<100%)



Month	2013-14	2012-13	2011-12	2010-11	2009-10
Apr	811	1026	1157	1264	NA
May	887	1042	1151	1370	NA
Jun	980	1007	1177	1323	NA
Jul	951	1020	1177	1269	NA
Aug	1077	1006	1069	1331	NA
Sep	933	983	1001	1320	NA
Oct	1025	1148	1205	1346	NA
Nov	931	1063	1138	1320	NA
Dec		940	1261	923	NA
Jan		922	1129	1171	1008
Feb		853	966	1207	1066
Mar		918	1145	1355	1084

1.3. Overall levels of recorded crime continue to show signs of reduction, with monthly totals in the first eight months being below target. At current rates it is predicted that recorded crime will fall by just under 5% which accounts to around 550 crimes.

1.4. York has remained in 10<sup>th</sup> place within its Iquanta crime family, after improvement from 13<sup>th</sup> place to 10<sup>th</sup> at the start of the year.

1.5. At the time of writing the final drafts to the York JSIA are being completed and the priorities that fall out of this will be available in the next month.

## 2. Violent Crime

2.1. Violent crime records in 2013/14 suggest that total levels in the city will continue to slowly fall and there may be reduction of 2500 cases of violent crime (10%) by the end of the year. Levels of violence and damage crimes within York's Cumulative Impact Area (City Centre) and the city centre continue to reduce.

2.2. York is currently in 8<sup>th</sup> place within its IQUANTA family for violent crime. A recent study of violent crime in York for the last 12 months compared to other similar night-time economy cities suggests that York has one of the lowest violent crime rates. This is a comparison of all violent crime, not Night-time economy crime.

- o Cambridge has 12.5 Violent Crimes per 1000 Population
- o York has 12.6 Violent Crimes per 1000 Population
- o Leeds has 14.7 Violent Crimes per 1000 Population
- o Oxford has 17.8 Violent Crimes per 1000 Population
- o Leicester has 22.7 Violent Crimes per 1000 Population
- o Lincoln has 19.0 Violent Crimes per 1000 Population
- o Nottingham has 27.4 Violent Crimes per 1000 Population

2.3. Levels of anti-social behaviour on a Saturday afternoon over the summer within the city centre (Op Erase) are similar to levels last year, although there have still been concerns raised from agencies and the public that this is an ongoing issue..

**YDH A&E Admissions for Assault**

**Totals**

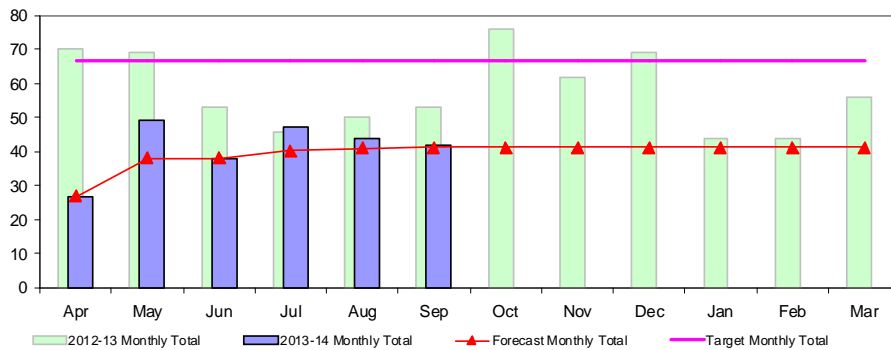
<b>Target 2013-14</b>	800
<b>Forecast</b>	494
<b>Cumulative</b>	247
<b>Target Monthly Total</b>	66.7

**Previous Years**

2007-08	n/a
2008-09	n/a
2009-10	n/a
2010-11	n/a
2011-12	698
2012-13	692

**Milestone Targets**

2013-14	800
---------	-----



**The Graph**

- 1) Target level 2013-2014 (Strategy end not the Yearly milestones)
  - 2) Forecasted annual total based upon a moving average
- (There has been no allowance for known seasonal patterns)

**Key:**

	- Action Needed (>120%)
	- Caution (100% - 120%)
	- No Action (<100%)



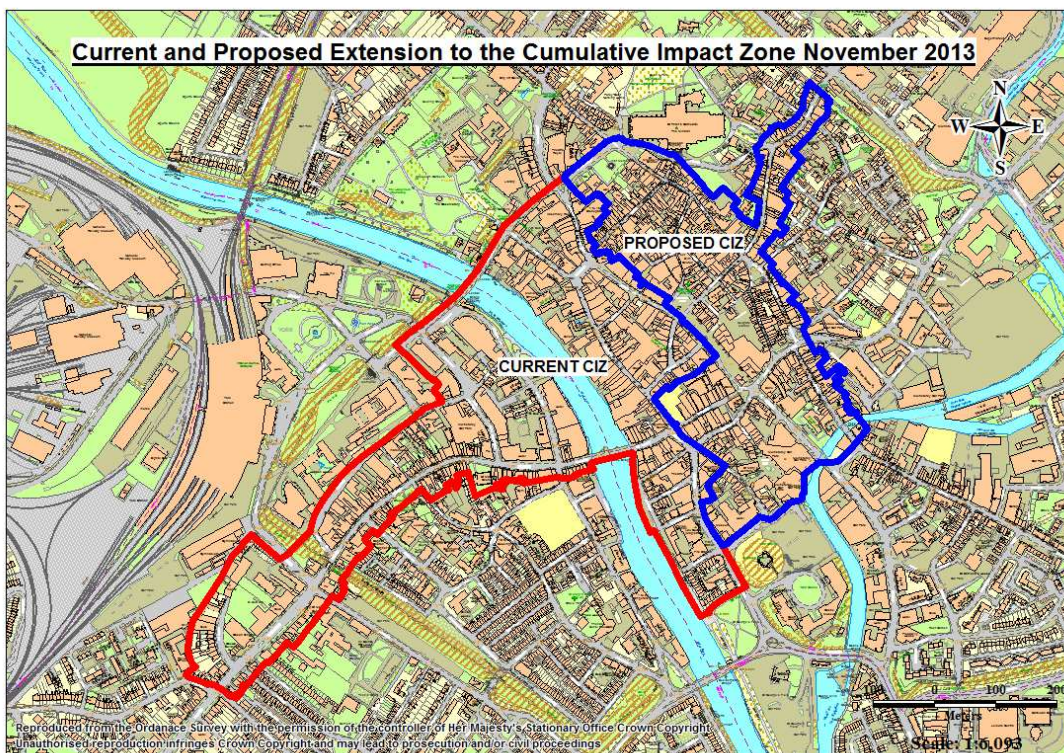
Month	2013-14	2012-13	2011-12	2010-11	2009-10
Apr	27	70	N/a	N/a	N/a
May	49	69	N/a	N/a	N/a
Jun	38	53	N/a	N/a	N/a
Jul	47	46	N/a	N/a	N/a
Aug	44	50	N/a	N/a	N/a
Sep	42	53	N/a	N/a	N/a
Oct	x	76	84	N/a	N/a
Nov		62	60	N/a	N/a
Dec		69	70	N/a	N/a
Jan		44	53	N/a	N/a
Feb		44	38	N/a	N/a
Mar		56	44	N/a	N/a

2.4. Information available from Accident and Emergency suggests that levels and patterns of attendance at YDH A&E department for victims of violent assault may reduce by around 30% in 2013/14. Further work has been

completed with this data-set, whereby all records have been analysed to understand where the assault took place. This analysis shows that we are able to link 15% of records back to licensed premises, and this figure in 2013-14 has been roughly similar to previous years. There is no valid location in around 50% of incidents

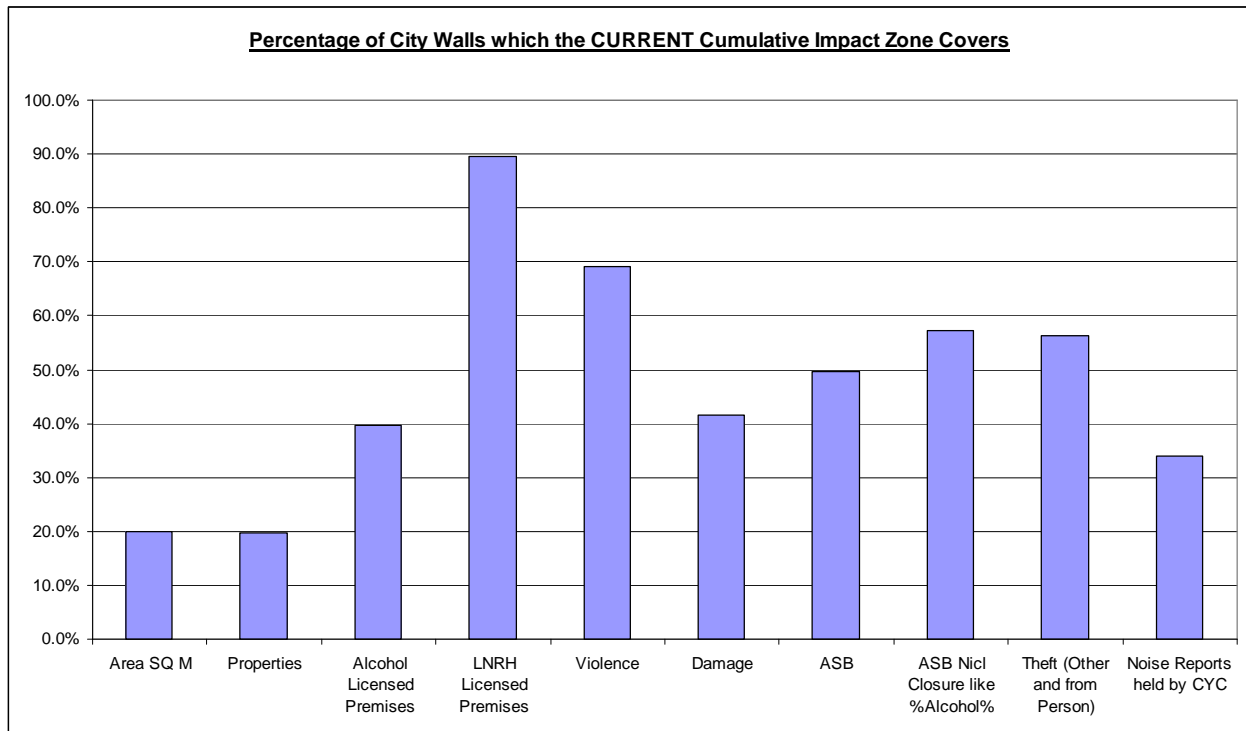
A&E Attendances at York for "Assault" were location is "Licensed Premise"													
Financial Year	Apr	May	Jun	Jul	Aug	Sep	Oct	Nov	Dec	Jan	Feb	Mar	Year Est.
2011-12							10	14	16	6	4	4	108
2012-13	9	6	6	9	6	11	8	8	17	4	12	10	106
2013-14	5	10	8	5	5	8							82

% of Total A&E Attendances at York for "Assault" were location is "Licensed Premise"													
Financial Year	Apr	May	Jun	Jul	Aug	Sep	Oct	Nov	Dec	Jan	Feb	Mar	Year Est.
2011-12							12%	23%	23%	11%	11%	9%	15%
2012-13	13%	9%	11%	20%	12%	21%	11%	13%	25%	9%	27%	18%	15%
2013-14	19%	20%	21%	11%	11%	19%							17%



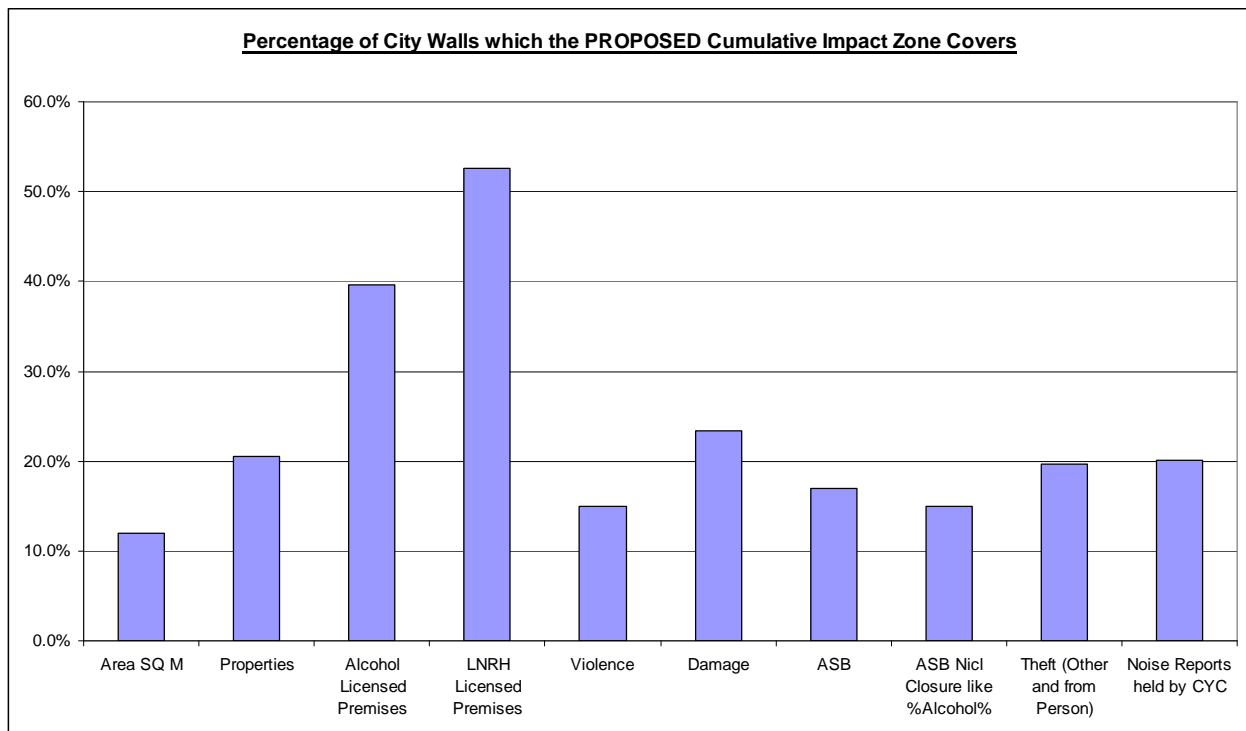
2.5. The application for the review of the cumulative impact area was heard at the licensing committee in October. Permission was granted to consult the relevant licensed premises and authorities on the expansion of the zone to include Goodramgate / Fossgate and Swinegate. The consultation also contained specific reference to off-licensed premises due to multi-agency concerns through the AVANTE task group about the growing number of medium sized supermarkets opening in the city centre and problems with 'alcohol loading'.

**Comparison Charts of % of City Walls totals which the Current CIZ covers**



(In these charts City walls refers to “the area within the city walls, and the small area of Blossom Street which is in the CIZ, but sits outside the City Walls”)

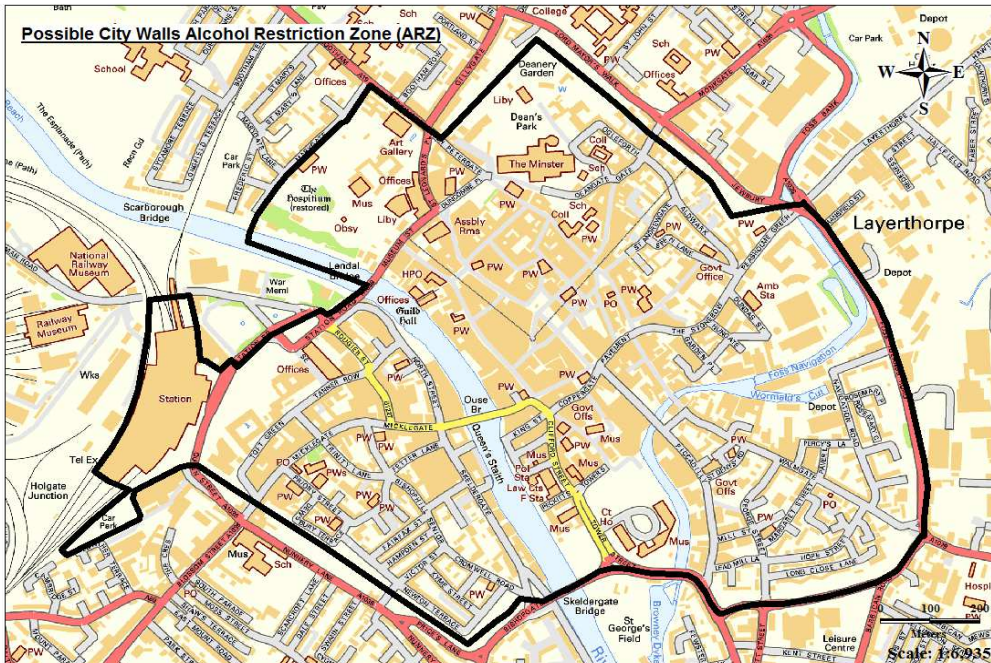
**Comparison Charts of % of City Walls totals which the Proposed CIZ covers**



(In these charts City walls refers to “the area within the city walls, and the small area of Blossom Street which is in the CIZ, but sits outside the City Walls”)

2.6. A study of crime in the vicinity of licensed premises has recently been updated. This study shows evidence that there are 115 premises that have a license which extends past midnight, which have some form of **crime** within a 50m Radius, during its licensable hours. 115 premises are 47% of the total premises which have a license after midnight. This study also shows that there are 71 premises that have a license which extends past midnight, which have some form of **violent crime** within a 50m Radius, during its licensable hours. 71 premises are 29% of the total premises which have a license after midnight.

2.7. Progress continues with the Alcohol Restriction Zone (ARZ). The consultation period for the ARZ has now ended and if Member approval is granted, we anticipate that the ARZ will be officially introduced in February. We are currently assessing sites for signage around the city and at the railway station.



2.8. If the ARZ is approved, we will provide portable display banners to be deployed at the Railway station on Saturdays to inform travellers of the ARZ and to try to deter them from 'alcohol loading' (taking purchased alcohol into pubs and clubs).

2.9. The Operation Erase working group met for the final time on 20th November. The action plan is now completed and future work will now be merged into the main AVANTE group. We are grateful for high levels of attendance at these meetings from representatives of British Transport Police, Visit York, York Hoteliers Association, Pub Watch, First Transpennine trains, CYC Licensing and NYP.

2.10. As part of the Operation Erase Action Plan, BTP have increased their presence on trains into York from Middlesbrough. Through engaging with

travellers they have noted a worrying trend of women pre-loading high amounts of spirits and being told by them that they wouldn't have the confidence to go out without having a number of drinks first. Door staff also report that it is females who tend to conceal bottles of spirits in handbags. We are keen to work with Public Health to address this issue through a campaign around alcohol loading/pre-loading in the New Year.

- 2.11. We have just completed work to establish an Alcohol Referral Project for York which is due to begin next month. The project will run for a pilot period of 12-18 months and will be aimed at York residents who have been arrested for public order and drunkenness offences (maximum of 5 offences). Those who are alcohol dependent, who have mental health issues or are prolific offenders, will be excluded. The individual will be bailed for 14 days and then given the option to attend a day long course, in which case the bail will be cancelled. If the option of the course is not taken up, then the person will be charged for the offence. The course will be provided by Lifeline and will encourage people to reflect on their behaviour and self-image, rather than purely alcohol issues. Previous studies have shown that the impact of the course on participants lasts for about a year but they will receive text message alerts (written by themselves on the course) after this time to keep up motivation. Funding has been provided by the North Yorkshire Substance Misuse Partnership which will allow for the course to be initially free of charge but a charge could be introduced at a later date. The University of York have agreed to provide evaluation of the project.
- 2.12. Following another year concerning the number of attendances by University of York (NB: not the University of York St. John) Freshers and their chaperones in drink at the York Hospital Emergency Department a meeting was convened on the 6th December, with both University SU reps, University Security Staff, North Yorkshire Substance Misuse Partnership, Public Health and the ED Consultant to look at ways in which we might run some awareness campaigns on campus.
- 2.13. AVANTE members have asked that work be done to ensure that all the Responsible Authorities (as identified under the Licensing Act 2003) are aware of their obligations and that we should work in partnership with these authorities when looking at licensing reviews.
- 2.14. AVANTE is also keen to look at improved coordination of work with Public Health as there is much cross-over between the Community Safety and Public Health agendas in this work area. We understand that Public Health is shortly to begin work on an Alcohol Strategy.

**York - Domestic Violence Incidents**

**Totals**

**Target 2013-14**

2840

**Forecast**

2781

**Cumulative**

1622

**Target Monthly Total**

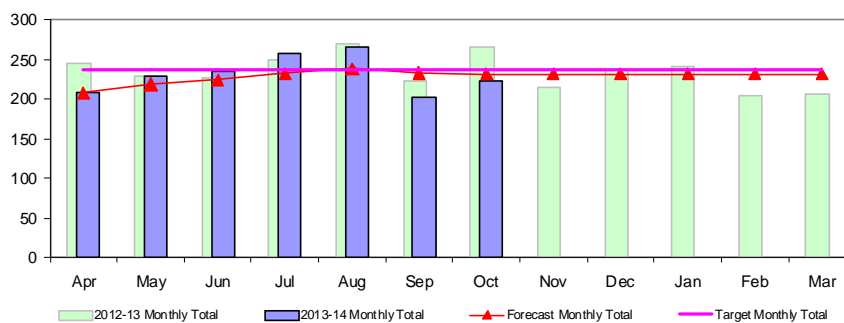
236.7

**Previous Years**

2007-08	NA
2008-09	NA
2009-10	2840
2010-11	2982
2011-12	2739
2012-13	2819

**Milestone Targets**

2013-14	2840
---------	------



**The Graph shows:**

- 1) Target level 2013-2014 (Strategy end not the Yearly milestones)
- 2) Forecasted annual total based upon a moving average of months

(There has been no allowance for known seasonal patterns)

**Key:**

- Action Needed (>120%)
- Caution (100% - 120%)
- No Action (<100%)



Month	2013-14	2012-13	2011-12	2010-11	2009-10
Apr	208	246	245	253	NA
May	230	230	233	265	NA
Jun	236	228	247	310	NA
Jul	257	250	264	281	NA
Aug	265	271	236	263	NA
Sep	203	223	232	218	NA
Oct	223	266	204	243	NA
Nov		215	205	193	NA
Dec		238	228	247	NA
Jan		241	212	256	NA
Feb		205	210	219	NA
Mar		206	223	234	NA

2.15. The level of “domestic” incidents so far in 2013-14 is predicted to be at similar levels to previous years. York saw the usual summer rises in reported/captured “domestic incidents, but this has been countered by the lower levels of incidents in September and October than in previous years.

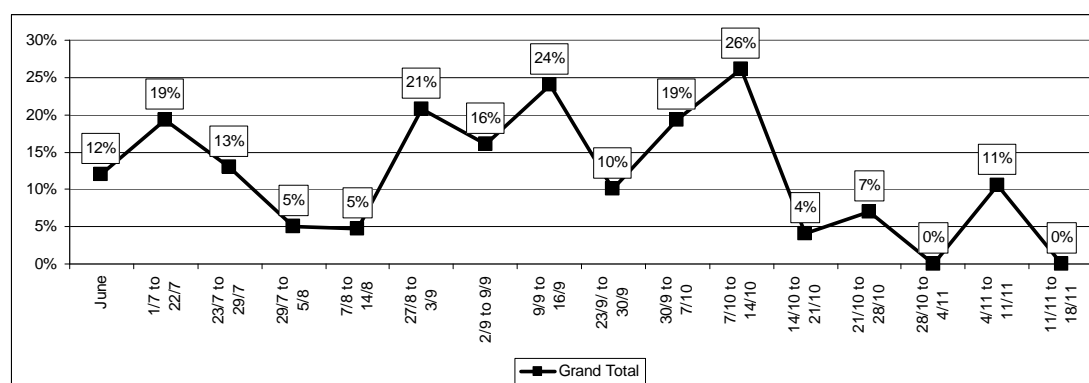
2.16. The project to re-look at historic domestic violence data to include incidents where victims are between the ages of 16 and 18 has now been completed and figures have been adjusted accordingly back to 2009-10 so that we are able to compare like with like. A study of domestic incidents by age group for the whole of North Yorkshire, suggests that the percentage of incidents where the victim is under the age of eighteen is increasing, although this can be partially put down to the change in legislation in April 2013.

**Domestic Incidents by Age Group in North Yorkshire**

Grouping	2010-11	2011-12	2012-13	2013-14 to Sep	Grand Total
Under 18	1.9%	1.9%	2.2%	3.4%	2.1%
18 - 19	5.4%	5.0%	4.6%	5.6%	5.1%
20 - 24	16.7%	17.2%	15.6%	14.3%	16.3%
25 - 29	14.5%	14.9%	13.5%	13.3%	14.3%
30 - 34	12.1%	12.5%	12.8%	12.6%	12.4%
35 - 39	12.7%	13.0%	12.6%	12.4%	12.7%
40 - 44	13.3%	12.8%	11.6%	12.8%	12.7%
45 - 49	10.3%	10.1%	10.4%	10.1%	10.2%
50 - 54	5.7%	5.4%	6.4%	6.9%	5.9%
55 - 59	3.2%	3.1%	4.3%	3.5%	3.4%
60 - 64	2.2%	2.0%	2.6%	2.0%	2.2%
65 - 69	0.9%	0.9%	1.6%	1.4%	1.1%
70 +	1.3%	1.2%	1.7%	1.8%	1.4%
Grand Total	100.0%	100.0%	100.0%	100.0%	100.0%

2.17. The level of repeat incidents so far in 2013/14 is at 27%, with data showing a long-term pattern of slow increase from 23% in 2011-12. The summer and early autumn period has seen a higher level of repeat incidents than usual.

Key Statistics	2013/14 Financial Year													Running Total
	Apr	May	Jun	Jul	Aug	Sep	Oct	Nov	Dec	Jan	Feb	Mar		
Total Domestic Incidents	208	230	236	257	265	203	223							1622
Change on Previous Month														
Repeat Incidents	43	59	54	46	66	74	102							444
% Repeats	21%	26%	23%	18%	25%	36%	46%							27%
Incidents involving Arrest	50	53	61	44	58	45	55							366
% Involving Arrest	24%	23%	26%	17%	22%	22%	25%							23%
Incidents Crimed	55	67	71	63	80	45	63							444
% Crimed	26%	29%	30%	25%	30%	22%	28%							27%
Incidents with Children Present	30	35	41	48	42	35	42							273
% with Children Present	14%	15%	17%	19%	16%	17%	19%							17%



2.18. Police recording systems are constantly being checked to make sure the correct workflows are started within domestic violence cases with 100 incidents being sampled weekly for quality and training purposes. An example of this is that a 253 form needs to be filled out at the commencement of a domestic case. The above graph shows that the % of domestic incidents where the correct work-flows have not been started has been improving.

2.19. The Making Safe Monitor and Custody Pilot report has been completed with a key outcome being that referrals from Custody/Police to the scheme increased by 87% (based on two referrals last whole year) between January and September 2013.

2.20. Training and development with Children’s Safeguarding Children’s Board, for new domestic abuse training will be taking place over the



winter which will involve targeted work. Bespoke Adult Safeguarding and Toxic Trio Training has been developed and commissioned to IDAS and Health.

- 2.21. The domestic violence early intervention work plan has been circulated and the scheme is due to start in January, in the Clifton and West of the city areas. The information sharing agreement has been signed up to by ACC Kennedy and is due to be published on the Internet next week. Establishing the correct case cohort is an important process, and therefore a data meeting was held to establish the referral and information sharing process.
- 2.22. The domestic violence co-ordinator has been running the MARAC co-ordination function from September through to November until the new MARAC coordinator was settled in.
- 2.23. The domestic violence Christmas campaign has been planned with buses to run through York and Selby in December carrying advertising, as well as posters and packs to be distributed to YOT, SNT's and Youth services.
- 2.24. The Domestic Violence Board has met twice within the last quarter and a planned update on their terms of reference and progress towards achieving White Ribbon status will be given at the meeting.
- 2.25. There has not been a domestic violence murder recorded in York since 2008-09 to date.

Indicator	Type	2007/08	2008/09	2009/10	2010/11	2011/12	2012/13
NI 34 Domestic Violence Murder	Target	N/a	0	0	0	0	0
	Out-turn	N/a	0	0	0	0	0

### 3. Anti-Social Behaviour

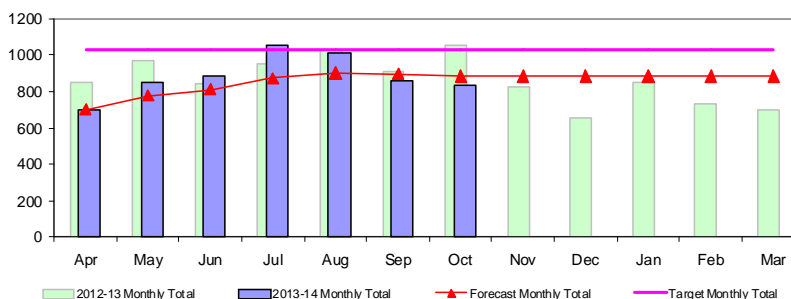
#### York - NYP Recorded ASB Calls for Service

##### Totals

<b>Target 2013-14</b>
12361
<b>Forecast</b>
10644
<b>Cumulative</b>
6209
<b>Target Monthly Total</b>
1030.1

<b>Previous Years</b>	
2007-08	12827
2008-09	12847
2009-10	13012
2010-11	12927
2011-12	12550
2012-13	10381

<b>Milestone Targets</b>	
2013-14	12361



The Graph shows:

- 1) Target level 2013-2014 (Strategy end not the Yearly milestones)
- 2) Forecasted annual total based upon a moving average of months

(There has been no allowance for known seasonal patterns)

**Key:**

- Action Needed (>120%)
- Caution (100% - 120%)
- No Action (<100%)



Month	2013-14	2012-13	2011-12	2010-11	2009-10
Apr	700	855	1139	1142	1158
May	856	972	1097	1170	1123
Jun	884	845	1225	1238	1150
Jul	1059	956	1285	1270	1235
Aug	1015	1032	1251	1229	1320
Sep	863	909	1001	1069	1046
Oct	832	1052	1133	1094	1164
Nov		824	886	1125	1015
Dec		655	862	833	966
Jan		850	851	854	939
Feb		730	832	843	836
Mar		701	988	1060	1060

3.1. Levels of Police recorded anti-social behaviour calls for service in York suggest that incident levels are likely to be at similar levels to last year.

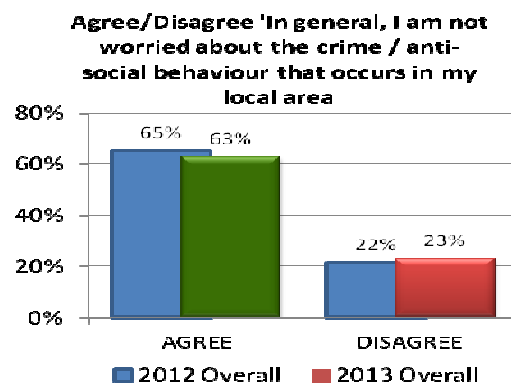
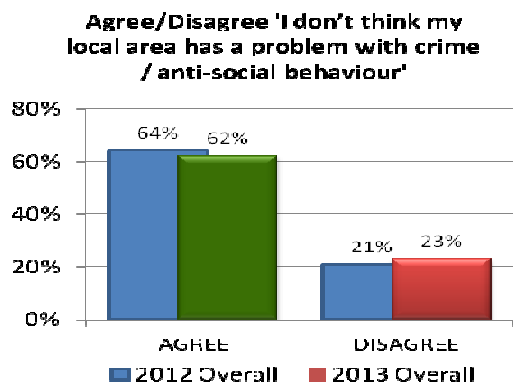
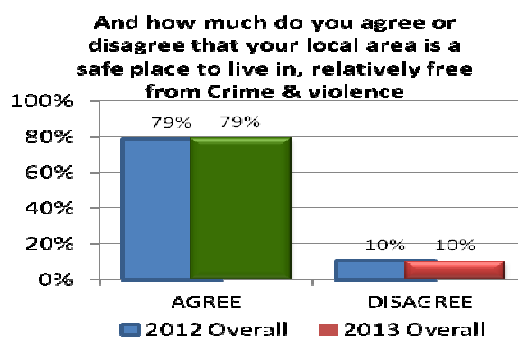
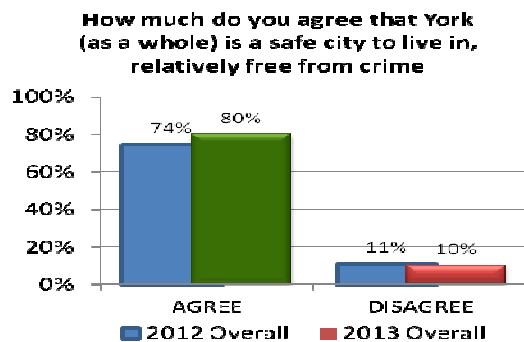
3.2. Available council environmental data for 2013-14 suggest that the although overall levels are similar to last year, although there may be slight rises in the following areas:

- Drug Related Litter
- Fly-tipping

3.3. In order to understand the requirement for the ASB Hub which is being proposed by CYC and NYP, work has been undertaken about scoping and understanding ASB demand across CYC and NYP. The table below shows that there are on average between 40 and 50 cases every day within the city which are recorded formally and sit within various IT systems. This table does not take in to account unrecorded and self-generated demand.

Demand on Average Day at 9 a.m Meeting for Previous 24hrs of Data (52 Days for each day)								
Type	Mon	Tue	Wed	Thu	Fri	Sat	Sun	Avg Day
NYP - Environmental	1.8	1.8	1.5	1.4	1.7	1.8	2.7	1.8
NYP - Nuisance	16.1	18.0	17.5	17.3	19.5	25.6	27.9	20.2
NYP - Personal	4.9	6.3	5.9	5.5	6.3	7.3	6.0	6.0
CYC - Abandoned Cars	0.0	0.4	0.4	0.4	0.3	0.4	0.0	0.3
CYC - Dog Fouling	0.2	1.7	1.9	1.5	1.4	1.8	0.2	1.2
CYC - Drug Related Litter	0.0	0.4	0.6	0.7	0.6	0.4	0.0	0.4
CYC - Flytipping - Rubbish	1.1	7.0	6.9	6.8	6.4	5.6	0.5	4.9
CYC - Graffiti	0.2	1.0	0.9	1.0	0.4	0.5	0.1	0.6
CYC - Housing ASB complaints Opened	0.0	0.8	1.1	1.1	1.1	0.6	0.0	0.7
CYC - Litter	0.5	2.8	2.9	3.0	2.6	2.8	0.2	2.1
CYC - Noise	3.9	4.2	4.7	4.2	3.6	5.1	5.9	4.5
NYFRS - Deliberate Fires	0.5	0.4	0.5	0.3	0.4	0.5	0.6	0.4
NYFRS - Hoax Calls	0.0	0.0	0.0	0.0	0.0	0.1	0.0	0.0
<b>Total</b>	<b>29.2</b>	<b>44.8</b>	<b>44.8</b>	<b>43.0</b>	<b>44.2</b>	<b>52.5</b>	<b>44.2</b>	<b>43.1</b>

- 3.4. Since the agreement by Cabinet in November, work is continuing to move forward with establishing an ASB hub within York. We are currently investigating possible IT solutions, demand management, shift patterns and the various organisational compliances that will have to be met in order to ensure that reports of ASB are dealt with in an appropriate and timely manner.
- 3.5. The procurement contract for the establishment of the horse bailiff contract has just ended. Staff will be evaluating the bids over the near future.
- 3.6. The Community Enforcement Officers recently had a very successful case, against a trader for illegal fly-tipping. The offender in this case had fines and costs of £2050 in total, and the press release led to a lot of interest from members of the public.
- 3.7. We are currently working across North Yorkshire to look at introducing consistent processes across the area to ensure we are ready for the likely introduction of the new ASB Bill.
- 3.8. Training has been arranged for the Community Enforcement officers who have taken on the role of dealing with dangerous dogs and abandoned and tethered horses.
- 3.9. The results from the Big York survey have been released, and these show that although results were largely similar to last year, there have been improvements in the last year of the percentage of people who feel that York is a safe city.



### 4. Acquisitive Crime

#### York - NI 16 - Serious Acquisitive Crime

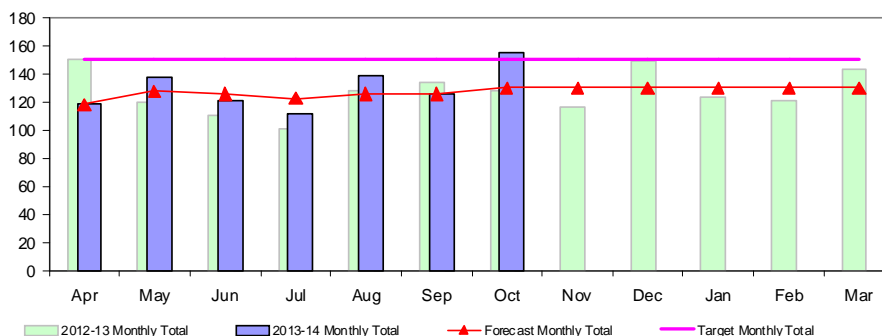
**Totals**

**Target 2013-14**  
1798

**Forecast**  
1557

**Cumulative**  
908

**Target Monthly Total**  
149.8



**Previous Years**

2007-08	3330
2008-09	3459
2009-10	1998
2010-11	2067
2011-12	1895
2012-13	1523

**The Graph shows:**

- 1) Target level 2013-2014 (Strategy end not the Yearly milestones)
- 2) Forecasted annual total based upon a moving average of months

(There has been no allowance for known seasonal patterns)

**Key:**

- Action Needed (>120%)
- Caution (100% - 120%)
- No Action (<100%)



Month	2013-14	2012-13	2011-12	2010-11	2009-10
Apr	118	150	131	159	202
May	137	120	137	217	138
Jun	121	110	155	166	124
Jul	112	101	137	167	138
Aug	139	128	122	159	207
Sep	126	134	144	175	207
Oct	155	128	191	147	224
Nov		116	186	157	188
Dec		149	197	138	160
Jan		123	182	167	124
Feb		121	148	193	145
Mar		143	165	222	141

4.1. Levels of serious acquisitive crime are predicted to be at similar levels to last year. This is due to the continued low volume of theft from and theft of a motor vehicle.

#### York - Domestic burglary (incl. attempts)

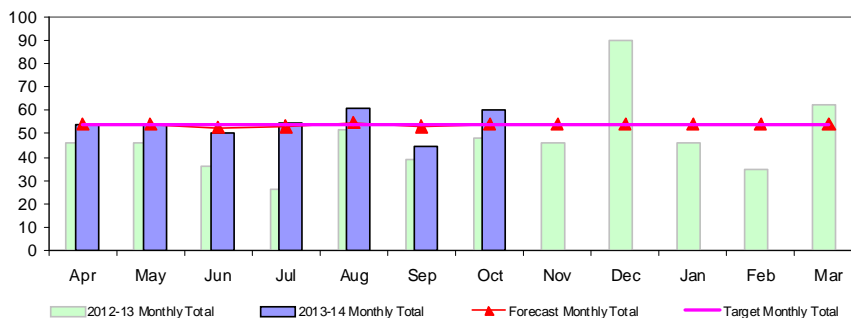
**Totals**

**Target 2013-14**  
642

**Forecast**  
650

**Cumulative**  
379

**Target Monthly Total**  
53.5



**Previous Years**

2007-08	989
2008-09	1126
2009-10	713
2010-11	777
2011-12	681
2012-13	572

**The Graph shows:**

- 1) Target level 2013-2014 (Strategy end not the Yearly milestones)
- 2) Forecasted annual total based upon a moving average of months

(There has been no allowance for known seasonal patterns)

**Key:**

- Action Needed (>120%)
- Caution (100% - 120%)
- No Action (<100%)



Month	2013-14	2012-13	2011-12	2010-11	2009-10
Apr	54	46	59	53	60
May	54	46	47	74	41
Jun	50	36	60	50	53
Jul	55	26	37	63	54
Aug	61	52	52	64	71
Sep	45	39	66	59	67
Oct	60	48	71	58	75
Nov		46	70	70	82
Dec		90	65	45	71
Jan		46	73	73	44
Feb		35	37	76	54
Mar		62	44	92	41

4.2. Although the long-term trend in domestic burglary is for a continued slow reduction, there have been more burglaries in the first half of 2013-14 than in previous years. These rises are city-wide with no specific modus

operandi. The percentage of dwelling burglaries where the property is insecure is still at 33%.

- 4.3. The levels of non-domestic burglary continue to fall. This is mainly due to the reduction in burglaries that occur to garages and business premises. The levels of burglary to sheds and garages have also seen a smaller reduction
- 4.4. The items stolen in burglaries in York have been analysed for the first six months of 2013-14. Although there is a vast amount of items stolen, the general pattern of these has not changed over the last 2 years with jewellery and money still the most stolen / targeted item.

Items Stolen in Burglaries in York			
General Property Type	Total	General Property Type	Total
Jewellery	21.9%	Horse tack	0.6%
Financial	15.1%	Alcohol	0.5%
Personal accessories	11.9%	Art/antiques	0.5%
Computers, parts or accessories	11.0%	Drugs	0.5%
Radio, T.V., etc	9.8%	Foodstuffs	0.4%
Machinery or tools	7.7%	Tobacco	0.4%
Other article	6.6%	Fuel	0.3%
Sporting goods	3.5%	Office equipment	0.3%
Photographic equipment	2.6%	Medical equipment	0.2%
Household articles	2.3%	Scientific or optical devices	0.2%
Vehicle accessory	1.4%	*NULL*	0.1%
Appliance	0.9%	Metal	0.1%
Weapons	0.7%	Safes	0.1%
Building materials	0.6%	Vehicle audio eqpt	0.1%
		Grand Total	100.0%

- 4.5. Safer York receive around ten requests per month, from residents for cold calling control zones, which come via Trading Standards. Of these half meet the criteria for implementation which Trading Standards are progressing
- 4.6. Auto-crime remains low, with the majority of crime being committed to on-street parked in suburban wards.
- 4.7. Residents in the following streets have been consulted on the possibility of alley-gating and at the recent council OIC meeting it has been decided to progress to full consultation.
- Fountayne Street / Scaife Street
  - Walworth Street North / Hanover Street West
- 4.8. Residents in the following streets have been consulted on the possibility of alley-gating. At the recent council OIC meeting it has been decided that as residents are concerned about the impacts of waste changes that would be needed with the implementation of the gates, further work is needed in conjunction with Waste services to look into the possibly of creating waste collection arrangements that meant that residents would be happy to have gates installed.

- Millfield Road / Thorpe Street
- Thorpe Street / Russell Street
- Russell Street / Scott Street
- Scott Street / Nunmill Street
- Nunmill Street / Bishopthorpe Road

4.9. An alley-gating programme for the next three years has been created by Safer York and Public Rights of Way, based on a matrix of reported crime and anti-social behaviour, as well as site visits to see if alley-gating could be practicably completed. This has formed the individual alleyways and systems in to a priority order. This list will be reviewed on a yearly rolling basis, and this year’s review has provided the following priority order.

Priority ID	Alleyway Name (Systems in Yellow)
1	Bishopthorpe Road Alleyways (5 Alleyways)
2	Wilton Rise - St Pauls Square
3	Baile Hill Terrace - Kyme Street
4	Curzon Terrace Alleyways (2 Alleyways)
5	Barbican Streets (3 Alleyways)
6	Burnsall Drive
7	Brunswick Street - Southbank Avenue
8	Main Avenue - Second Avenue
9	Adelaide Street Alleyways (3 Alleyways)
10	Siward Street Alleyways (2 Alleyways)
11	Finsbury Street
12	Fenwick Street - Anne Street
13	Kitchener Street Area (5 Alleyways)
14	Farndale Street Alleyways (2 Alleyways)
15	Upper Hanover Street - Stamford Street West
16	Queen Annes Area (3 Alleyways)
17	Beaconsfield Street Area (6 Alleyways)
18	Holgate Road - Wilton Rise
19	Livingstone Street - Albany Street
20	Fountainne Street - Scaife Street

4.10. It is predicted that York is likely to have 300 more cycles stolen in 2013/14 than last year, a possible 45% increase. It must be borne in mind that York has seen significant cycle theft reduction in the last 2 years and that in the latter six months of the financial year there are normally less bikes stolen.

4.11. York continues to have lower cycle theft rates than other cycling cities which have seen similar rises at this time of year.

**Volume of Cycle Thefts per 1,000 Population**

	Nov08- Jan09	Jul09- Sep09	Jul10- Sep10	Jul11 - Sep11	Jul12- Sep12	Jun13- Aug13
York	1.41	1.43	2.24	0.98	1.09	1.43
Cambridge	4.30	5.42	7.04	4.36	5.10	4.61
Oxford	2.56	3.52	3.93	4.87	4.00	3.65
Brighton			1.34	1.02	1.47	1.40
Bristol			1.54	1.37	1.20	1.25
Exeter			0.94	0.86	1.05	0.96
Lincoln			2.43	2.29	2.40	1.57
Manchester			1.44	1.64	1.12	1.04

**Other Cities Rates Compared to York**

	Nov08- Jan09	Jul09- Sep09	Jul10- Sep10	Jul11 - Sep11	Jun12- Aug12	Jun13- Aug13
Cambridge	3.1	3.8	3.1	4.4	4.7	3.2
Oxford	1.8	2.5	1.8	5.0	3.7	2.6
Brighton			0.6	1.0	1.3	1.0
Bristol			0.7	1.4	1.1	0.9
Exeter			0.4	0.9	1.0	0.7
Lincoln			1.1	2.3	2.2	1.1
Manchester			0.6	1.7	1.0	0.7

- 4.12. The number of bikes registered on Operation Spoke is approaching the 16000 mark and an event to mark the 15000<sup>th</sup> bike registered on Operation Spoke was held in West Offices on the 29<sup>th</sup> October.
- 4.13. Serious acquisitive crime at the following geographic and thematic areas continues to remain low:
- York College
  - Industrial Estates
  - Educational Establishments
  - Shopping Parks
  - City Centre Car Parks
  - Hotels
  - York Hospital
  - Leisure Facilities
- 4.14. Following an increase in domestic burglaries, we held a problem-solving meeting with SNA and CID officers to review the Burglary Action plan. The plan has now been redrafted and the frequency of meetings will increase from quarterly to bi-monthly.
- 4.15. Following recommendations from SYP, NYP have now joint-funded with us a number of Hermes and Apollo devices which allow for mass registration and checking of goods registered on the Immobilise property register. Officers have now received training and the Hermes device was deployed throughout the recent week of action (w/c 18<sup>th</sup> November) including events at West Offices and the University. University staff and the Safer Homes Handyperson staff will also be trained.
- 4.16. We are currently working to put together an 18 month programme of alley-gating schemes. This is to ensure improved coordination with CYC Waste Services. We have scheduled monthly Alley-gating meetings to ensure that the programme remains on track.
- 4.17. New crime prevention leaflets have been produced for victims of burglary and those living in the vicinity of the victimised property. The leaflets provide basic crime prevention advice and also advertise the CASAC (Community Action and Support against Crime) and Safer Homes Handyperson Scheme. The leaflets are colour-coded for ease of use by police officers. The new leaflets complement the more comprehensive 'Guide to Preventing Domestic Burglary' which should be distributed at the same time.
- 4.18. Copies of the above and a supply of UV property marking pens have been provided to each SNA inspector.
- 4.19. Meetings are scheduled to improve the coordination of the CASAC and Safer Homes Handyperson Schemes. Information on both schemes has been sent to all SNA inspectors for distribution to officers with an offer that both organisations are happy to attend Briefings to give more information about their service.
- 4.20. An additional meeting of the Off-Campus Crime Group was scheduled on the 1<sup>st</sup> November to discuss the recent increase in burglaries to

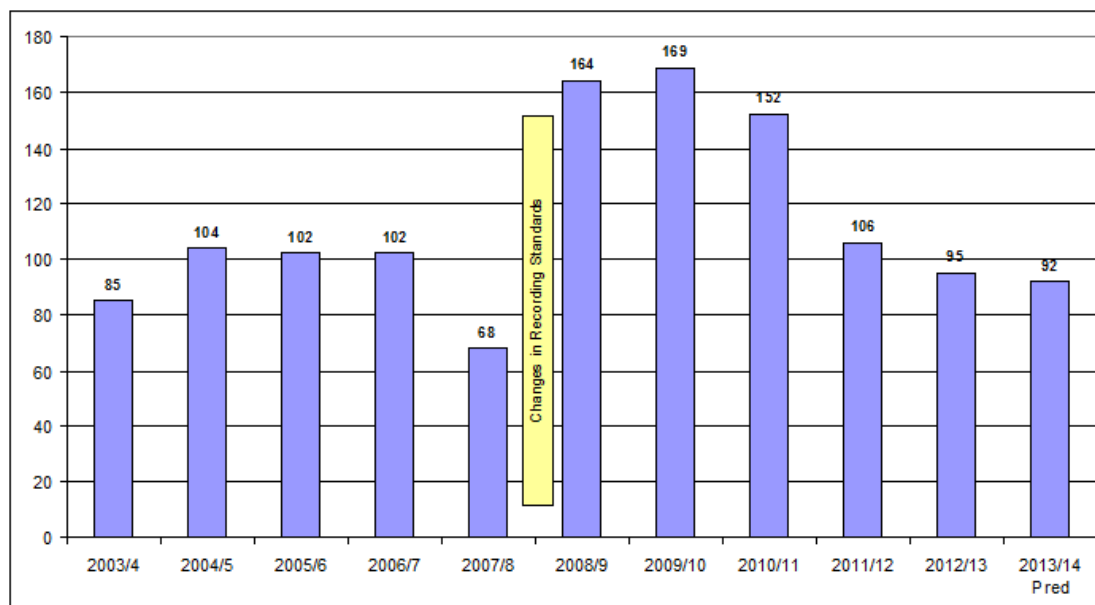
student properties. This was attended by University Security Staff, representatives from students' unions, university accommodations teams and SNA representatives. We continue to seek consistency of approach across both universities, particularly in the crime prevention material they provide. With this in mind both SUs are currently working to develop a joint-campaign and this is to be discussed at a follow-up meeting on the 22<sup>nd</sup> November. Our immediate aim is to prevent a repeat of last December when we experienced a spike in burglary, mainly attributable to student properties. We continue to work with the SU's, Landlords and Accommodations teams to send out alerts using Facebook, Twitter and other forms of social media.

- 4.21. The Auto-crime Task Group has been disbanded for the time being due to low crime levels. We will, however, continue to monitor crime levels and the group will be reconvened if crime begins to rise in this area.
- 4.22. Following an increase in cycle theft a problem-solving meeting was convened with NYP officers to review the Cycle Theft action plan. Meetings have now increased to bi-monthly. We are currently experiencing increases in the targeting of high value road bikes.
- 4.23. SNA's will deploy the Hermes devices to register cycles onto Immobilise.
- 4.24. In partnership with Visit York and iTravel York, SYP has led on an initiative to provide secure cycle parking facilities to hotels and B&Bs in the run up to the Grand Depart in York. Equipment can be provided by the Safer Homes Handyperson or via the park-that-bike initiative. This information will be distributed to hotels and B&Bs by Visit York and will be promoted on their website.
- 4.25. We are currently working to have effective crime prevention initiatives in place for March/April 2014 to coincide with the start of the racing season and an anticipated increase in road cyclists coming to York to cycle the Tour de France route.



## 5. Other Information

5.1. NYP recorded information shows that there were 46 hate crimes recorded in York in the first quarter of 2013/14. This would suggest that reported Hate Crime in York will fall for a fifth year.



5.2. The pattern of hate crimes reported in first six months of 2013/14, have followed a similar trend to previous years where the majority of crimes/incidents are of a racial nature and that crimes/incidents are spread throughout the city with a small concentration around taxi services and late-night refreshment houses in the city-centre.

Ward	Homophobic	Racial	Religious	Sexual orientation	Transgender	Total
Bishopthorpe		1				1
Clifton		2				2
Dinghouses & Woodthorpe		3				3
Fishergate		1				1
Guildhall	1	13	2			16
Heworth		4		1		5
Holgate				1		1
Hull Road		2				2
Huntington & New Earswick				1		1
Micklegate		8				8
Rural West		1		1		2
Strensall					1	1
Westfield		3				3
<b>TOTAL</b>	<b>1</b>	<b>38</b>	<b>2</b>	<b>4</b>	<b>1</b>	<b>46</b>

**York - Shoplifting**

**Totals**

**Target 2013-14**

1494

**Forecast**

1421

**Cumulative**

829

**Target Monthly Total**

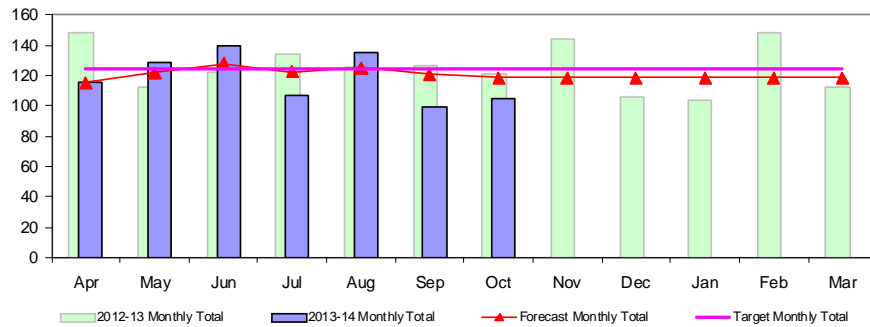
124.5

**Previous Years**

2007-08	1645
2008-09	1745
2009-10	1573
2010-11	1659
2011-12	1483
2012-13	1502

**Milestone Targets**

2013-14	1494
---------	------



**The Graph shows:**

- 1) Target level 2013-2014 (Strategy end not the Yearly milestones)
- 2) Forecasted annual total based upon a moving average of months  
(There has been no allowance for known seasonal patterns)

**Key:**

	- Action Needed (>120%)
	- Caution (100% - 120%)
	- No Action (<100%)



Month	2013-14	2012-13	2011-12	2010-11	2009-10
Apr	115	148	139	159	163
May	129	112	140	137	151
Jun	139	122	120	130	123
Jul	107	134	119	142	127
Aug	135	125	104	145	118
Sep	99	126	109	154	133
Oct	105	121	105	140	110
Nov		144	126	153	140
Dec		106	153	111	119
Jan		104	135	102	108
Feb		148	94	137	149
Mar		112	139	149	132

5.3. The predicted level of shoplifting for 2013/14 is expected to be around 100 cases fewer than the previous year. This is due to the small reductions in crime which have been seen in all areas of the city.

5.4. It is predicted that there will be 250 less arrests for shoplifting in York in 2013/14 than there were last year. On average there are 50 different individuals who are arrested for Shoplifting in York each month. Of these 50 individuals, 30 of them are not arrested for shoplifting again within the next 12 months.

5.5. Levels of theft by an employee and burglary of a business premises are predicted to continue reducing based on available data.

5.6. Work is ongoing to establish a new Business Crime Partnership for York.

5.7. Best practice visits have been made to Chester Against Business Crime and Businesses Against Crime in Leeds (BACIL) where we have gathered a wealth of information and advice.

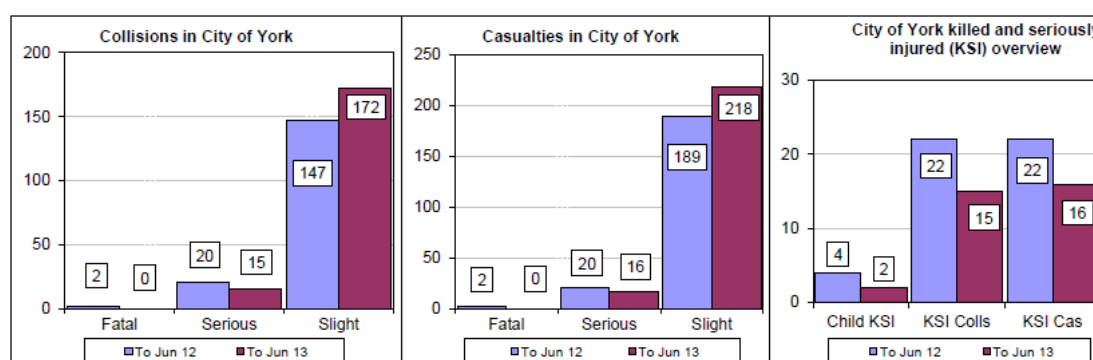
5.8. A number of business crime intranet systems for sharing information and intelligence between stores (to replace the paper target pack) have been looked at.

5.9. We invited BACIL to West Offices on the 10<sup>th</sup> December to present their new real-time business intranet system to a number of people including retail crime representatives from Selby, Harrogate and Scarborough. BACIL have given us access to their system for information sharing purposes.

5.10. The Crime Reduction Manager has met with the Association of Business Crime Partnerships to seek advice on best practice in this area and they have offered to give ongoing support as we are keen to set up a scheme based upon best practice.

5.11. A letter has been sent to RACY members, informing them that we are looking to set up a new business crime partnership for York and are aiming to launch this in April 2014.

5.12. Data available data for crime and Incidents at Ministry of Defence property show that there on average 1 crime and 1 incident recorded across their property in the last 2 months. Long-term trends indicate that crime, ASB and domestic violence continue to remain low across the ministry of Defense estates.



5.13. Data available on RTC's for the first six months of the years suggest that there have been less fatal and serious casualties, but and increase in the number of slight casualties. There were no recorded fatal casualties within the first six months of the year.

### **Report Written by:**

Ian Cunningham, Senior Analyst,  
Tanya Lyon, Crime Reduction Manager,  
Paul Morrison, Neighbourhood Safety Manager.  
Jo Beilby, Domestic Violence