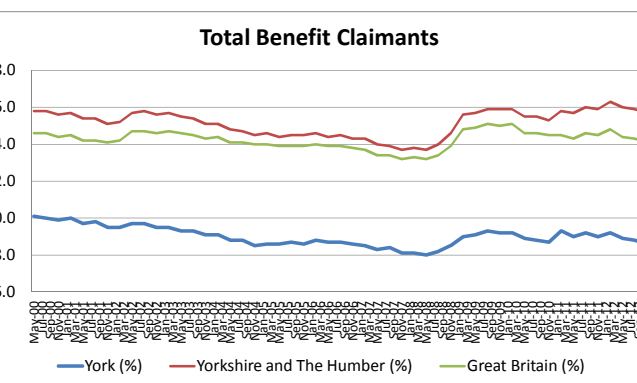
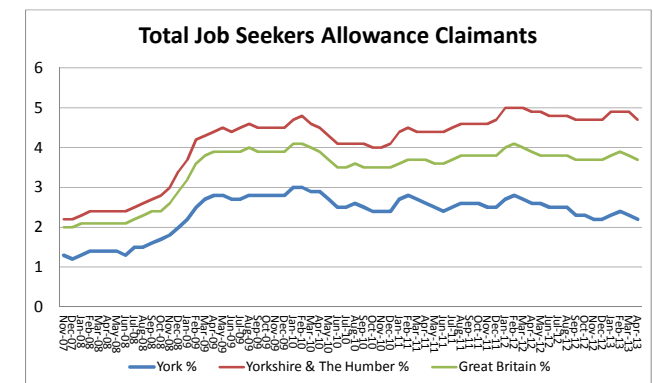
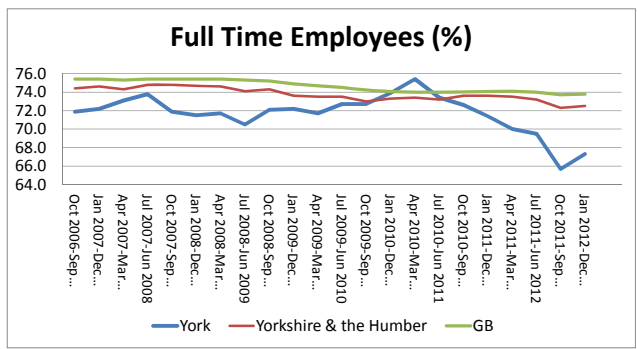
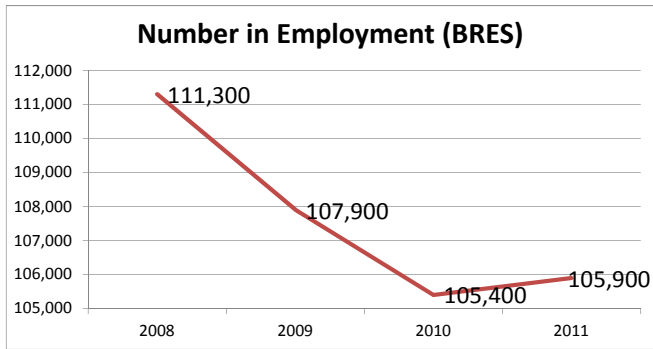
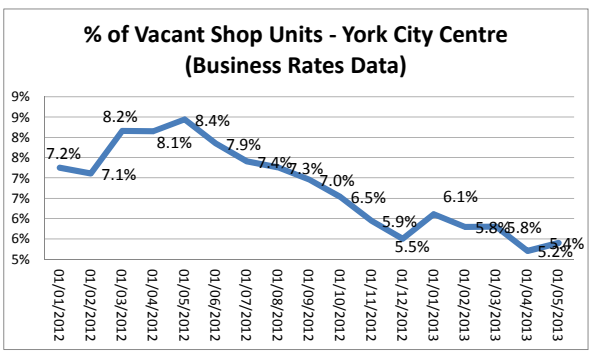
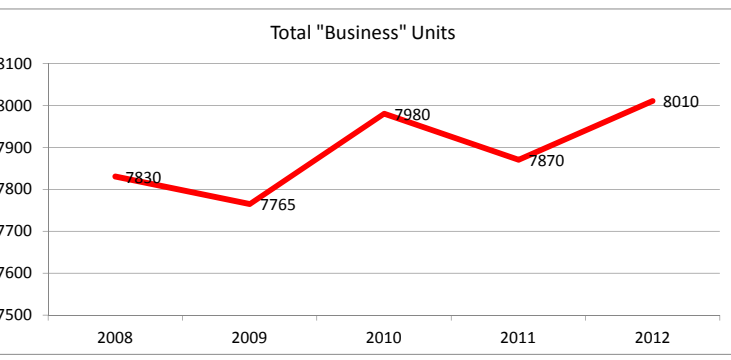


Headlines	
Achievements/Good Performance:	Areas in need of improvement/Issues to watch:
<ul style="list-style-type: none"> The Unemployment rate gap between York and Great Britain has increased through 2012. This is positive performance Job Seekers Allowance (JSA) claimant rate is decreasing from the same time last year and has decreased by a total of 574 since April 2012 York has the joint fourth lowest youth JSA rate growth after Oxford, Cambridge and Aberdeen (Centre for Cities). The total number of Business Units is the highest on record at 8010 in 2012 Business Start-ups (bank account data) in the year to March 2013 are slightly behind the total at the same point last year. Business Births have decreased, However, the Business Death rate has decreased to a larger extent and Business Survival rates are now above the regional and national rates. Average Weekly Earnings for full-time workers (Residents) has increased between 2011 and 2012, with York having the highest in the Region and performing above the national figure. Average weekly Earnings for full-time workers (Workplace) have increased and York is now the second highest in the Region, in 2011 York was fourth highest in the region. The number of employee jobs and those in employment in York has increased between 2010 and 2011 The number of vacant City Centre shops is comparatively low. NEETS - the % of NEETS is improving (provisional figures to Nov 12) 	<ul style="list-style-type: none"> GVA per head is on a downward trend (new data 2010 and 2011), deviating from the national and regional averages Footfall performance in York has weakened through 2012/13, and parking transactions and revenue are also down. This trend is mirrored in The Visitor Information Centre, the major York tourist attractions and Coach Parking data. Youth Unemployment and Long-term JSA Claimants (Although these have decreased from a year ago) Workless Households/Children in working Households Average Earnings are increasing, however, the pay gap between the lowest paid and the average is increasing, and the pay gap between males and females is increasing. Of some concern, correlating with the increase in Part-time Employment, is that part-time weekly earnings have decreased in 2012 from 2011. The proportion of full-time workers has decreased by 8.1 percentage points since 10/11, the region and GB reducing by 0.9 and 0.2 percentage points respectively, meaning that the part-time proportion has increased by the same percentage points. There is some evidence that Males are also taking on second jobs to account for the shift from full to part-time in their primary jobs. This could affect the poverty agenda Footfall: York's performance has declined. Footfall to April 2013, stands at -4.4% in the year to date. This is below other Historic Towns and Cities and all towns and cities which stands at -2.0% although has seen improvement in the last two months

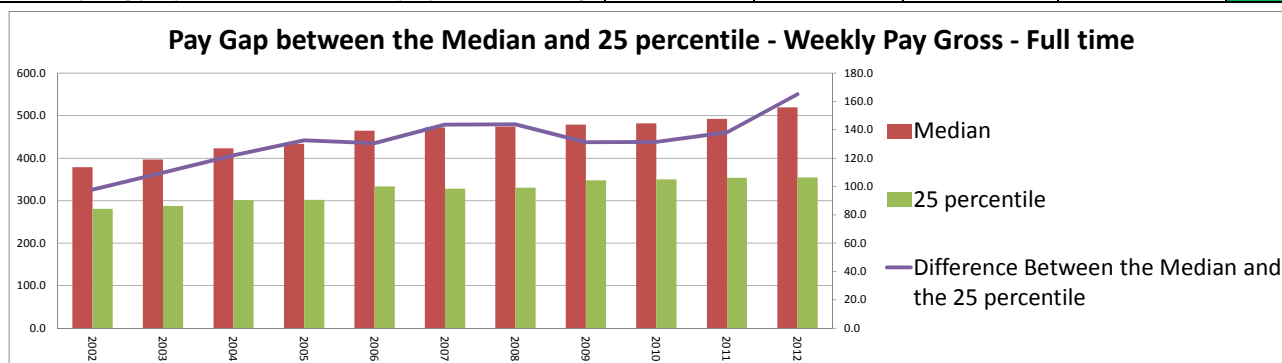
Performance area					Latest	Trend
Economy						
	2008	2009	2010	2011		
Total In Employment (BRES)	111,300	107,900	105,400	105,900	Increase	
Total Employee Jobs (BRES)	106,900	102,700	102,300	102,500	Increase	
	Jan 09-Dec 09	Jan 10-Dec 10	Jan 11-Dec 11	Jan 12-Dec 12		
York's unemployment rate below the national	1.30%	1.30%	1.90%	2.20%	Increase	
% of Full-time employees	71.7%	75.4%	70.0%	65.7%	Decrease	
% of Part time employees	28.3%	24.5%	30.0%	34.1%	Increase	
	Apr-10	Apr-11	Apr-12	Apr-13		
JSA Claimants % of Working Age Population (16-64)	2.90%	2.60%	2.60%	2.20%	Decrease	
JSA Claimants: 18 to 24 % of Working Age Population	3.70%	3.40%	3.40%	2.60%	Decrease	
JSA Claimants: 16 to 64 Over one year % of Working Age Population	0.40%	0.40%	0.50%	0.50%	Static	
	Nov-09	Nov-10	Nov-11	Nov-12		
Total Benefit Claimants (Working Age 16-64)	12,510	12,030	11,930	11,400	Decrease	
Lone Parents (Working Age 16-64)	1,320	1,240	1,090	930	Decrease	
	N/A	Jan-Dec 2009	Jan-Dec 2010	Jan-Dec 2011		
Workless Households % of all Households(APS)		17.30%	16.80%	14.90%	Decrease	
Children under 16 in Workless Households (APS)		10.00%	9.60%	10.10%	Increase	
	2007	2008	2009	2010		
Proportion of Children in Child Poverty (HMRC)	13.70%	12.80%	13.30%	12.90%	Decrease	



Business					
	2009	2010	2011	2012	
Total Businesses (Local Units – ONS)	7,765	7,980	7,870	8,010	Increase
	2008	2009	2010	2011	
Business Births	735	570	665	655	Decrease
Business Deaths	550	630	635	615	Decrease
GVA per head (ONS)	21,212	20,253	20,242	20,103	Decrease
	Apr-10	Apr-11	Apr-12	May-13	
Number and % of vacant city centre shops (Business Rates)	54	55	55	36	Decrease
	7.84%	8.15%	8.15%	5.40%	
	March 2010	March 2011	March 2012	March 2013	
Business Start - ups (bank data)	470	573	535	481	Decrease



Pay & Skills					
	2009	2010	2011	2012	
Average earnings of residents - Gross Weekly Pay (% difference York & GB)	£479.10	£481.70	£492.30	£519.40	Increase
Earnings gap between the 25 percentile and the median (York)	-2.4%	-4.2%	-2.2%	2.2%	Increase
% of working age population qualified	Jan 09-Dec 09	Jan 10-Dec 10	Jan 11-Dec 11	Jan 12-Dec 12	
No qualifications	8.00%	7.20%	6.80%	6.40%	Decrease
to at least L2 and above*	77.80%	77.70%	77.10%	79.80%	Increase
to at least L3 and above*	64.00%	64.90%	60.60%	65.60%	Increase
to at least L4 and above*	40.80%	40.00%	40.80%	41.30%	Increase
	2009	2010	2011	2012	
NEET: % of young people not in education, employment or training	4.30%	3.70%	5.60%	4.90%	Decrease



Actions and Priorities for 2013/2014

- Develop a more co-ordinated approach to business engagement and support
- Develop a co-ordinated Investment Plan for the city – identifying and matching investment priorities to funding/investment finance.
- Identify and secure investment in key city centre development sites e.g. York Central
- Develop and deliver a targeted Inward Investment Strategy – attracting more businesses to locate and invest in York.
- Deliver Internationalisation Strategy – raising the global profile of York to attract more outside investment and jobs into the city.
- Work with LEP partners to ensure York is able to take full advantage of major emerging funding opportunities associated with City Deal and the move towards a Single Growth Fund arrangement with Government

Projects

- Tour de France – Grand depart
- Super Connected City
- Maintaining the authorities educational attainment
- Local plan
- Get York Building

Latest Economic Indicators for York: These are stored in the BI Hub under:

<V:\Business Intelligence Hub\01 - The City\Economic Data\York Economic Strategy Statistics.xlsx>

Key Contact: Jonathan Walker(4428), Business and Economic Intelligence Officer