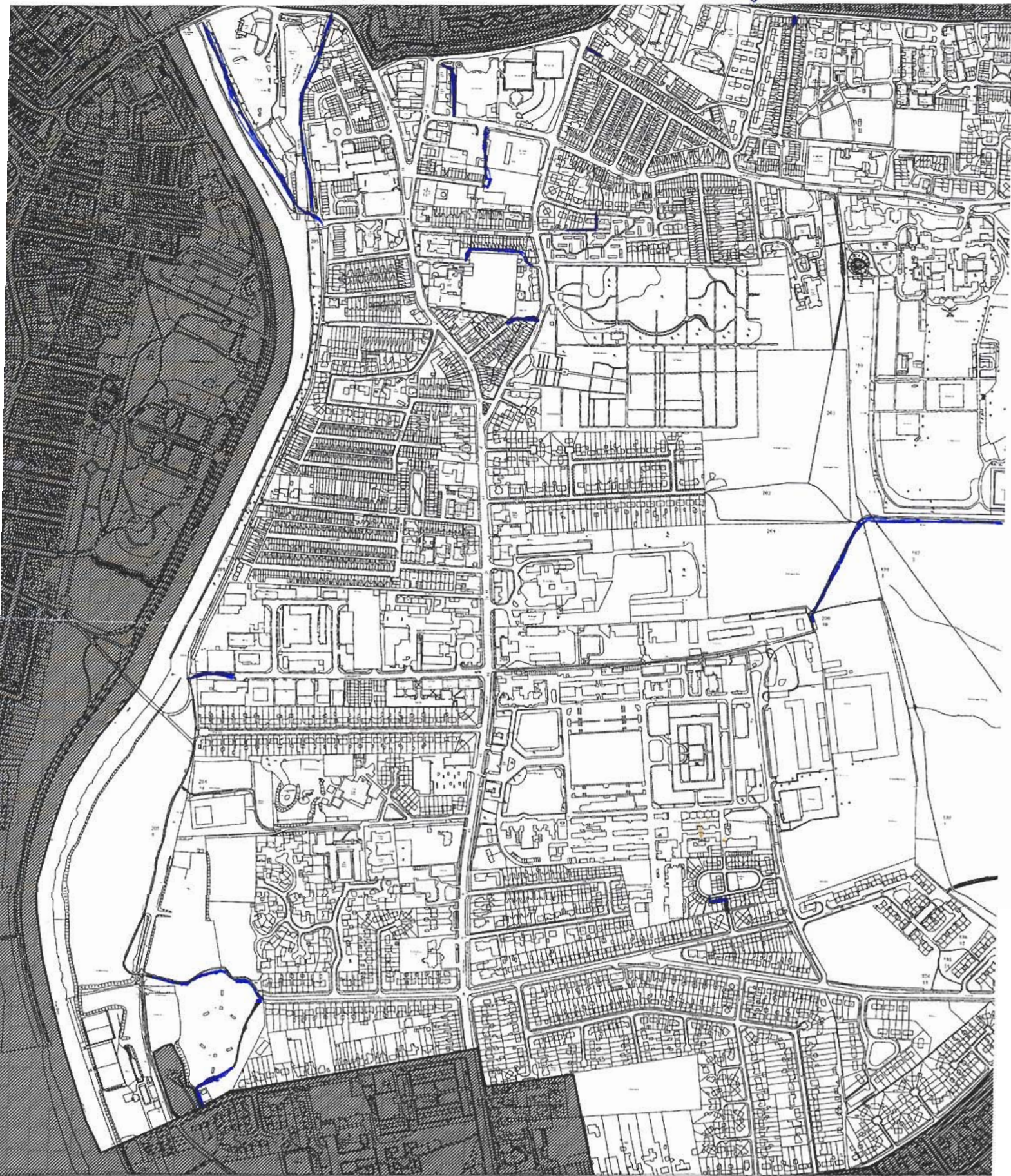


Re EMDS 6/4/10.

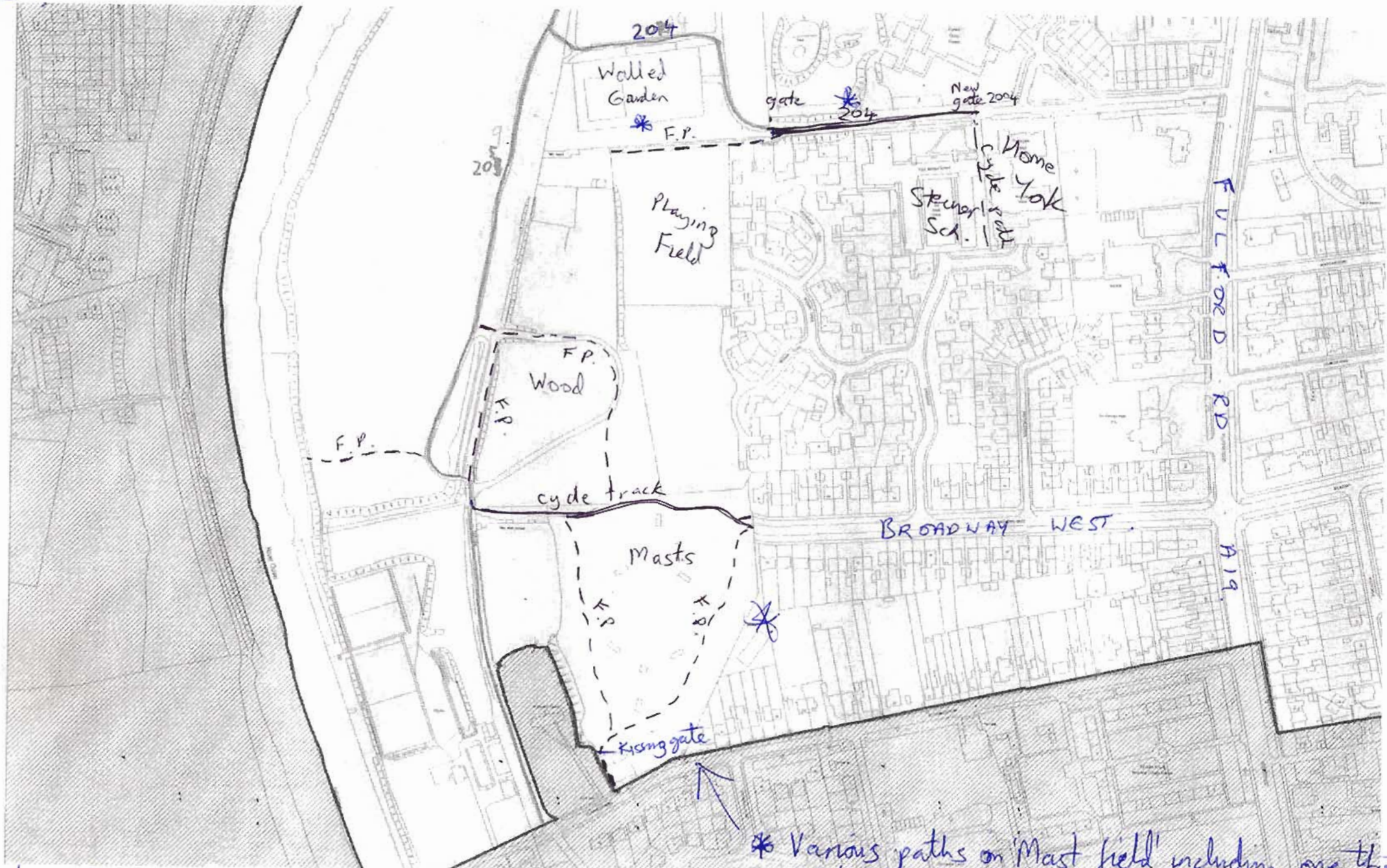
FISHERGATE WARD Paths that need adding to map.



From Mr. D'Agorne.

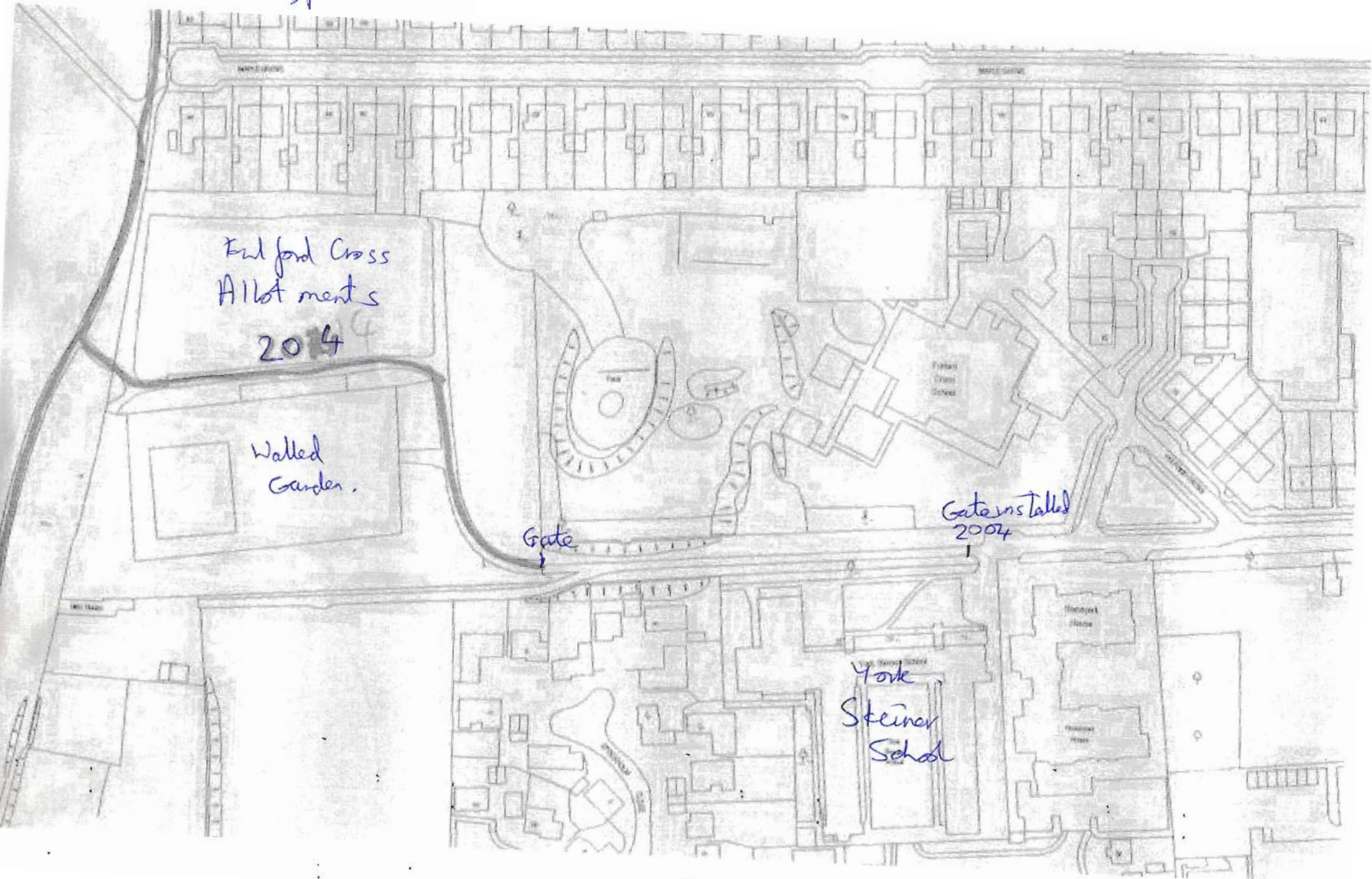
FISHERGATE

①

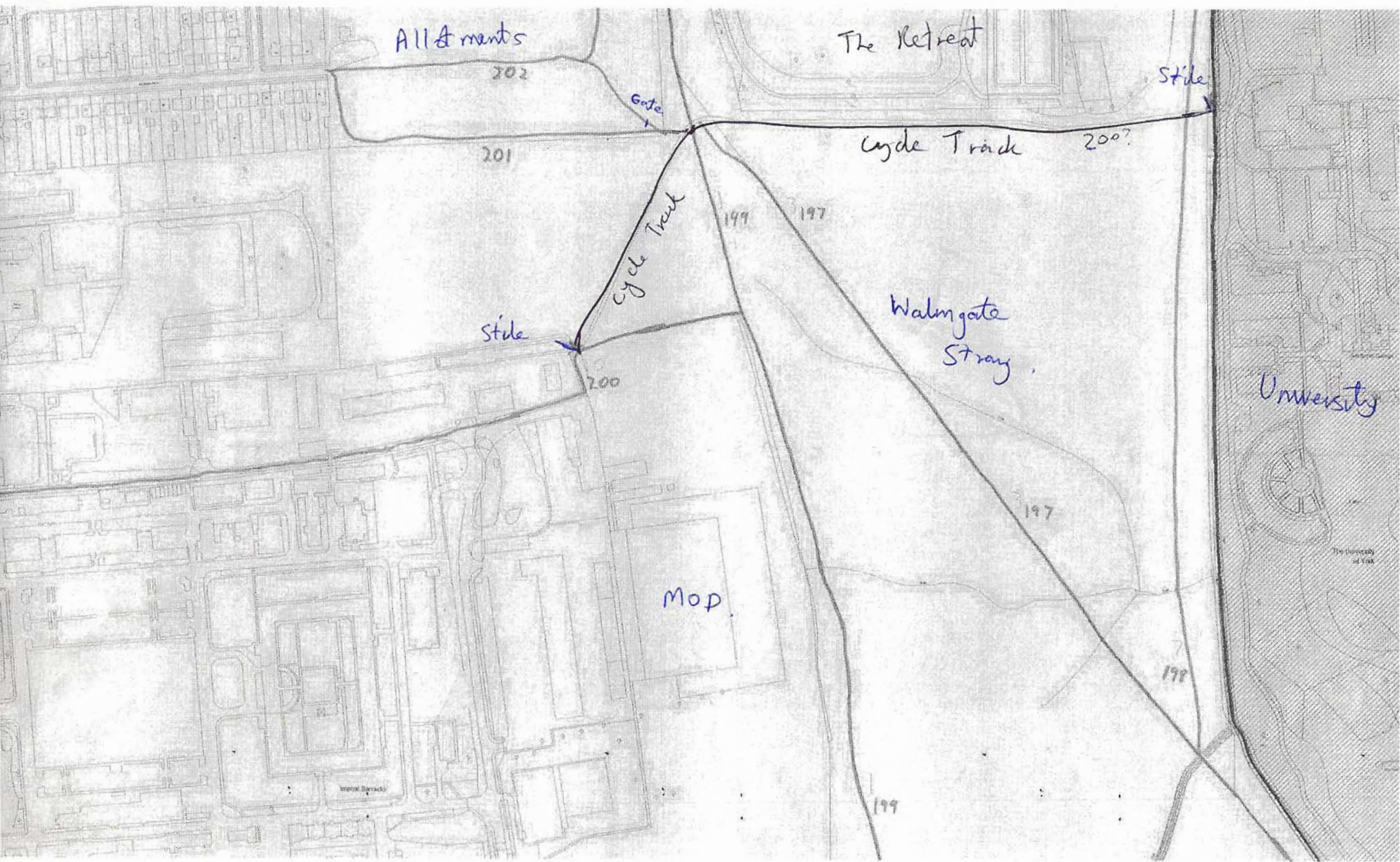


* 204' should extend up to adapted highway at the Green Fulford Cross
* F.P. Down to the Playing Field * Cycle access alongside Steiner sch / Home York.
* Various paths on 'Mast field' including one that links from St. Oswalds Rd to Broadway West.

Larger version of ①



FISHERGATE
②



Sustrans cycle track: SE 614 505 - 618 506

FISHERGATE,

3

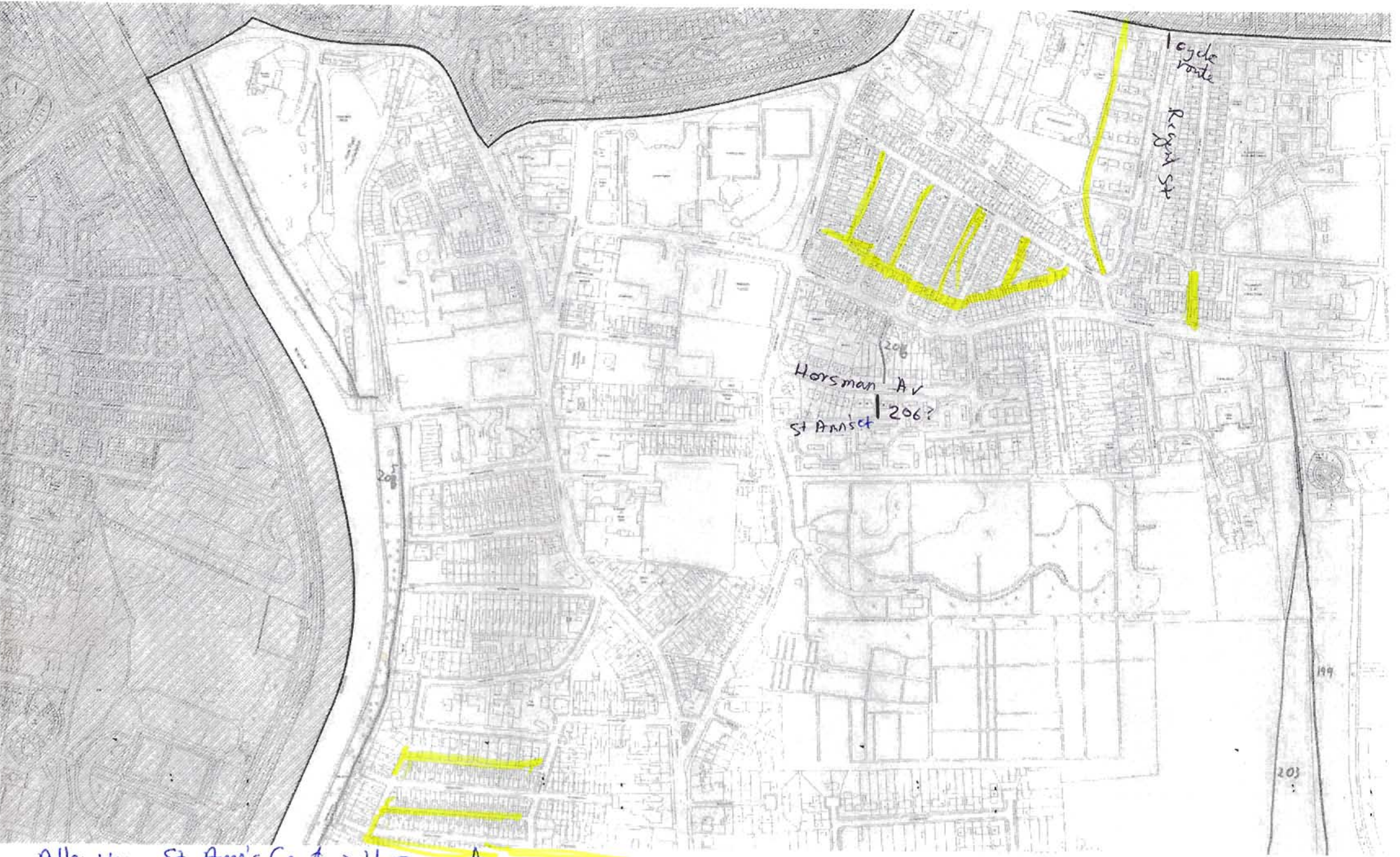


SE 603 499 Footpath from Lesley Av
into Army housing area.

SE 618 498 - 619 509 New cycle track
created 2008.

FISHERGATE

4



Alleyway St Ann's Court → Horsman Av,
cycle route through road closure at end of Regent St.

FISHERGATE

5.



Back alley to Melbourne St linking Winter scale St - Cemetery Rd.

Straight from end of Howard St alongside Playground to Cemetery Rd.

FISHERGATE

6



Links from riverside path / cycleway via steps to the adjoining streets.

Micklegate - Knavesmire PROWs

