

TO BE READ IN CONJUNCTION WITH:  
 DWG No. 1367-SY-GA-261  
 DWG No. 1367-SY-GA-262  
 DWG No. 1367-SY-GA-263

! IDENTIFIED HAZARDS	
1.	GAS PIPE BELOW. CARE TO BE TAKEN DURING EXCAVATION
2.	WATER PIPE BELOW. CARE TO BE TAKEN DURING EXCAVATION
3.	EXCAVATION AREA IS ADJACENT TO MANHOLE AND AN EXISTING GULLY. CARE TO BE TAKEN DURING WORKS TO ENSURE NO DAMAGE TO EXISTING UTILITIES STRUCTURES
4.	CARE TO BE TAKEN WHEN EXCAVATING NEAR UNDERGROUND OBSTRUCTION. COMPACTION OF FILL TO BE BY HAND. NO LOADING BY PLANT WITHIN 1M.

- NOTES**
- GENERAL**
- DO NOT SCALE FROM THIS DRAWING.
  - ANY QUERIES ARE TO BE REFERRED BACK TO THE ENGINEER FOR CLARIFICATION.
- CONCRETE**
- ALL CONCRETE IN ACCORDANCE WITH BS 8500.
  - CONCRETE DESIGNATED MIX: AS PER BOLLARD MANUFACTURERS SPECIFICATION. NO ADMIXTURE IS TO BE USED WITHOUT THE ENGINEERS PERMISSION.
  - SHOULD THE AIR TEMPERATURE RISE ABOVE 30°C OR FALL BELOW 5°C, SPECIAL PRECAUTIONS ARE TO BE TAKEN, ALL TO ENGINEER'S APPROVAL.
  - ANY SOFT SPOTS WITHIN THE GROUND REMOVED AND BACKFILLED WITH TYPE 1 FILL MATERIAL. PRIOR TO PLACING OF BLINDING CONCRETE. FILL MATERIAL WELL COMPACTED IN 300mm LAYERS.
  - CURING TO BE DONE FOR AT LEAST 7 DAYS PRIOR TO ANY LOADING BEING APPLIED TO THE FOUNDATION.
  - REINFORCEMENT BARS TO BE HIGH YIELD STEEL TO CURRENT BS 4449, FABRIC REINFORCEMENT TO BS 4483.
  - REINFORCEMENT SCHEDULING TO BS 8666.
  - REINFORCEMENT AS PER BOLLARD MANUFACTURERS SPECIFICATION.
  - REINFORCEMENT LAP LENGTHS ARE TO BE A MINIMUM OF 72 D UNLESS OTHERWISE NOTED.
  - ALL MATERIAL AND WORKMANSHIP IN ACCORDANCE WITH RECOMMENDATIONS OF BS 8110.
- BOLLARDS**
- PRODUCTS TO BE INSTALLED IN ACCORDANCE WITH MANUFACTURERS GUIDELINES AND REQUIREMENTS.
  - FOUNDATIONS PROVIDED IN ACCORDANCE WITH MANUFACTURERS RECOMMENDATIONS.
  - ALL BOLLARD PRODUCTS TO BE SUCCESSFULLY IMPACT TESTED TO PAS 68 / IWA 14
  - THE GAP BETWEEN BOLLARD CORES SHALL BE NO MORE THAN 1200mm AT 600mm ABOVE FINISHED GROUND LEVEL.
  - SHROUD MATERIAL: STAINLESS STEEL
  - SHROUD FINISH TO BE AGREED WITH THE CLIENT
  - SHROUD TO HAVE 50mm REFLECTIVE BAND

REV	DATE	DESCRIPTION	BY	CHKD	APVD
A	10.06.22	TENDER ISSUE	MJH	SLP	

CONTRACT NAME:  
 CITY OF YORK COUNCIL

CLIENT:  
 CITY OF YORK COUNCIL

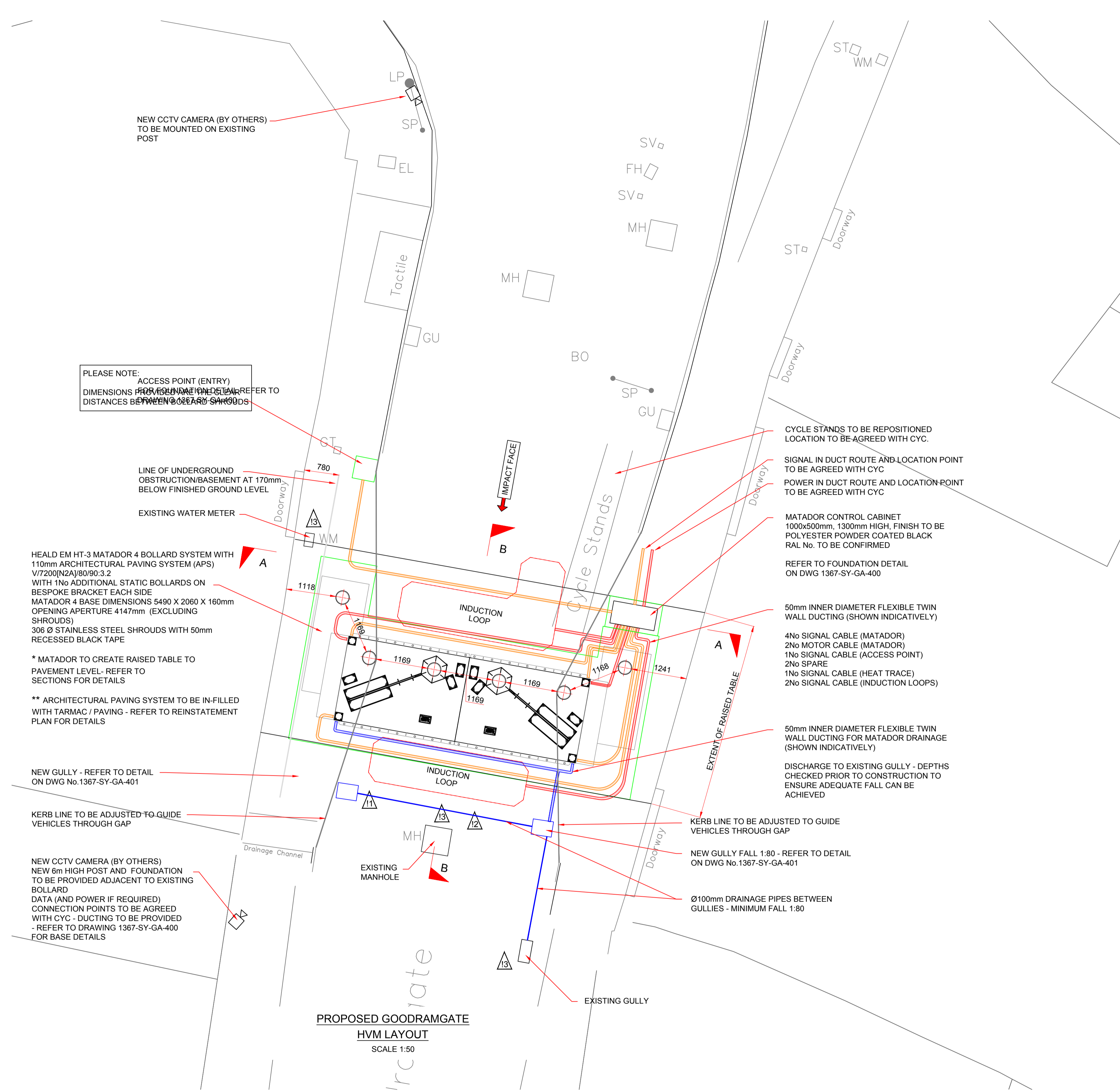
**D.J. Goode & Associates Ltd.**  
 Consulting Civil Engineers.  
 The Old Control Tower,  
 Lavenham Airfield,  
 Old Bury Road,  
 Alpheton,  
 Sudbury, Suffolk,  
 CO10 9BT.  
 Tel: 01284 827472  
 Email: p1@djgoode.co.uk



DRAWN BY:	DATE:	CHECKED BY:	DATE:	APPROVED BY:	DATE:
MJH	02.03.22	SLP	08.04.22		

DRAWING TITLE:  
 GOODDRAMGATE HVM SCHEME  
 PROPOSED LAYOUT

SCALE:	DRAWING STATUS:	PROTECTIVE MARKING:
1:50 @ A1	TENDER	



PROPOSED GOODDRAMGATE  
 HVM LAYOUT  
 SCALE 1:50

PLEASE NOTE:  
 ACCESS POINT (ENTRY)  
 DIMENSIONS PROVIDED ON THIS PLAN REFER TO  
 DIMENSIONS BETWEEN BOLLARD CENTRES

HEALD EM HT-3 MATADOR 4 BOLLARD SYSTEM WITH  
 110mm ARCHITECTURAL PAVING SYSTEM (APS)  
 V7200(N2A)80/90.3.2  
 WITH 1No ADDITIONAL STATIC BOLLARDS ON  
 BESPOKE BRACKET EACH SIDE  
 MATADOR 4 BASE DIMENSIONS 5490 X 2060 X 160mm  
 OPENING APERTURE 4147mm (EXCLUDING  
 SHROUDS)  
 306 Ø STAINLESS STEEL SHROUDS WITH 50mm  
 RECESSED BLACK TAPE

\* MATADOR TO CREATE RAISED TABLE TO  
 PAVEMENT LEVEL- REFER TO  
 SECTIONS FOR DETAILS

\*\* ARCHITECTURAL PAVING SYSTEM TO BE IN-FILLED  
 WITH TARMAC / PAVING - REFER TO REINSTATEMENT  
 PLAN FOR DETAILS

NEW GULLY - REFER TO DETAIL  
 ON DWG No.1367-SY-GA-401

KERB LINE TO BE ADJUSTED TO GUIDE  
 VEHICLES THROUGH GAP

NEW CCTV CAMERA (BY OTHERS)  
 NEW 6m HIGH POST AND FOUNDATION  
 TO BE PROVIDED ADJACENT TO EXISTING  
 BOLLARD  
 DATA (AND POWER IF REQUIRED)  
 CONNECTION POINTS TO BE AGREED  
 WITH CYC - DUCTING TO BE PROVIDED  
 - REFER TO DRAWING 1367-SY-GA-400  
 FOR BASE DETAILS

CYCLE STANDS TO BE REPOSITIONED  
 LOCATION TO BE AGREED WITH CYC.

SIGNAL IN DUCT ROUTE AND LOCATION POINT  
 TO BE AGREED WITH CYC

POWER IN DUCT ROUTE AND LOCATION POINT  
 TO BE AGREED WITH CYC

MATADOR CONTROL CABINET  
 1000x500mm, 1300mm HIGH, FINISH TO BE  
 POLYESTER POWDER COATED BLACK  
 RAL No. TO BE CONFIRMED

REFER TO FOUNDATION DETAIL  
 ON DWG 1367-SY-GA-400

50mm INNER DIAMETER FLEXIBLE TWIN  
 WALL DUCTING (SHOWN INDICATIVELY)

4No SIGNAL CABLE (MATADOR)  
 2No MOTOR CABLE (MATADOR)  
 1No SIGNAL CABLE (ACCESS POINT)  
 2No SPARE  
 1No SIGNAL CABLE (HEAT TRACE)  
 2No SIGNAL CABLE (INDUCTION LOOPS)

50mm INNER DIAMETER FLEXIBLE TWIN  
 WALL DUCTING FOR MATADOR DRAINAGE  
 (SHOWN INDICATIVELY)

DISCHARGE TO EXISTING GULLY - DEPTHS  
 CHECKED PRIOR TO CONSTRUCTION TO  
 ENSURE ADEQUATE FALL CAN BE  
 ACHIEVED

KERB LINE TO BE ADJUSTED TO GUIDE  
 VEHICLES THROUGH GAP

NEW GULLY FALL 1:80 - REFER TO DETAIL  
 ON DWG No.1367-SY-GA-401

Ø100mm DRAINAGE PIPES BETWEEN  
 GULLIES - MINIMUM FALL 1:80

SITE PLAN  
 SCALE 1:2500